

INTRODUCTION

Established in 2001, Access engineering is the premier engineering firm listed in the Colombo Stock Exchange. Its track record includes over 100 major projects successfully completed. Access Engineering has been a force behind many multidisciplinary infrastructure projects across the country.

AEL, as it is familiarly known, specializes in advanced engineering solutions, for which it possesses unmatched technical know-how and resources.

The Company presently employs over 1,800 workers comprising more than 150 engineering and Technical Professionals, Skilled Personnel, Tradesmen, Skilled and Unskilled Workers. Access Engineering's fully-owned subsidiaries are, Access Realities (Private) Limited which owns the Access Tower office, Access Retail 2(Private) Limited, the Developer of the proposed Access Tower II which is currently under construction. Its 84% owned subsidiary Sathosa Motors PLC holds the franchise for Isuzu commercial vehicles. The latest addition under the AEL umbrella is a 80% owned Access Projects Private Limited, a leader in the leisure related building construction and interior solutions. ZPMC Lanka Company Private Limited is an Associate Company of AEL with a 30% stake in a Joint Venture with Shanghai Zhenhua Heavy Industries Company Limited (ZPMC) of China, the world's largest Container Handling Equipment Manufacturer.

Access Engineering is recognized as a 'specialist contractor' by the National Contractors' Association of Sri Lanka and as a 'major contractor' by Construction Industry Development Authority (ICTAD – Institute of Construction Training and Development), with 'C1' (highest) grading for multiple engineering disciplines. It is compliant to ISO 9001:2008, ISO 14001:2004 and OHSAS 18001:2007 accreditations for its quality, environmental-and health and safety management systems and is a signatory to the UN Global Compact.

ICONIC PROJECTS

1. Polduwa Bridge, Diyawanna Oya: Design and Construction

This notable project for the RDA in Battaramulla was successfully completed by AE with the joint venture of Mabey Bridge, UK. This being commenced in May 2013, was delivered on time in December 2014. A composite steel girder bridge with a span of 71m carrying a six-lane dual-carriageway deck, Polduwa Bridge is designed to support anticipated traffic volumes. This was funded by the UK government.

2. Gated Salinity Barrier across Walawe River at Ambalantota

Installing of Gated Salinity Barriers across the Walawe River is another successful project completed by AE as the joint venture of China Geo. This project for NWSDB in Ambalantota, Hambantota commenced in January 2010 and was completed in March 2013

3. Colombo Metro Optical-Fibre Network Project

This optical Fibre Network project for Dialog Broadband Network (Pvt) Ltd commenced in January 2010 and was completed in October 2013 by AE as the main contractor.

4. Harbours and Marine Work

Access Engineering's input to this Unity Container Terminal development included dredging, construction of a rubble-mounted embankment along the west and north revetments to protect quay settlement, rectification of the settlement with the anchor rods and tie rods, construction of an underwater mass concrete curtain wall 9-11m in height along the inside face of the revetment to prevent further quality settlement, and the restoration of the yard area. This project for Sri Lanka Port Authority in the new north Pier Port of Colombo was completed in February 2013 by AE as the main contractor.

5. Mattala International airport Project- Cargo and Fire Rescue Building

One of the most significant infrastructure project completed during 2013 was the Mattala International Airport, Country's 2nd international airport which commenced the commercial operation in March 2013. Access Engineering also successfully completed their involvement in the implementation of the Airport Apron Fuel Hydrant system and the aviation fuels storage facilities in Mattala With the highest emphasis placed on quality.



ONGOING PROJECTS

1.Colombo-Kandy Road (A1), Kadawatha to Nittambuwa: Rehabilitation and Improvement

This ongoing project in Gampaha district for the RDA commenced in September 2013 and is due to be completed by November 2016. Access Engineering is the Main Contractor of this project which is funded by the Government of Sri Lanka.

2. Rehabilitation of Labugama and Kalatuwawa Water Treatment Plants

This ongoing project for National water Supply and Drainage Board started in December 2013 and due to be completed in June 2016. This is funded by the Government of Hungary.

3. Relocation of Underserved Settlements Project (Phase II): Construction of 941 Low-Cost Housing Units at Henamulla

The Project is a part of Urban Regeneration Project Phase II which was initiated by the Urban Development Authority. This UDA project commenced in August 2014 and is due to be completed by January 2017. Access Engineering is the main contractor of this ongoing project.

4. ICT Colombo One : Diaphragm Wall, Anchoring and Excavation for Basement Car Park

ITC Hotels, India's largest luxury hotel chain, is building a luxury development, ITC Colombo One Hotel and Residences in Sri Lanka's capital. This ongoing project for welcome Hotels Lanka (Private) Limited started in November 2014 and due to be completed in August 2015.

5. Production of Construction Related Materials

Access Engineering PLC specializes in the production of a range of quality construction material to cater the demands of both internal projects and external customers. The investment in production facilities such as asphalt plants, concrete batching plants, quarries and crusher plants compliment the diverse operation of AEL which has enabled backward integration of its resources to maximize efficiency of its services to the large clientele including both local and foreign clients.

SECTORS

Roads and Highway construction, Water and Wastewater Management, Airports and Aviation, Flyovers and Bridge Construction, Building construction and Piling, Irrigation and land drainage sector, Investment projects, Telecommunication, Infrastructure, Dredging and reclamation, Harbour and Marine Works, Environment Management and Waste Management.



Access Engineering PLC

Access Towers, No 278, Union Place, Colombo 02, Sri Lanka.
Tel : +94 011 7606606
Fax : +94 011 7606605
Web : www.accessengsl.com
Email : investor.relations@accessengsl.com
Email : inquiries@accessengsl.com



INTRODUCTION

Consulting Engineers & Contractors (Pvt) Ltd, commonly known as CEC, is a major construction company in Sri Lanka, with C1 ICTAD classification as a major road contractor for over a decade. Over the last 15 years CEC has grown from being a small independent contractor to a major construction and road development company, and is now recognized as a dependable contractor with a very high rating for delivering projects with great quality and on-time.

The company’s relentless drive towards achieving quality of service saw the company achieve ISO 9001-2000 and ISO 9001-2008 certification, which established CEC’s credentials as a construction

company in Sri Lanka which is quality conscious and customer centric. CEC has successfully completed development of 500 kilometers of road in Sri Lanka thus far, with over 200 km in 2009/2010 alone.

One of the key success factors being that CEC owns an extensive inventory of plant and machinery used in road development projects, with 6 crusher plants, and 2 Asphalt plants along with 6 quarries, ensuring speedy supply of quality raw material to its work sites.

Although CEC started off as a Construction Company, mainly into the development of road we have now diversified initially into related industries which included the construction of building. Subsequently they have moved into tourism, taking on construction.



ICONIC PROJECTS

1. Madawachiya - Mannar - Taleimannar Road (A14)
This is a project of Road Development Authority in Northern province, which was successfully delivered by CEC in 2010.

2. Medawachchiya Horowpothana Road

This was a Road Development project in North Central Province and delivered in 2009. This project covered length of 16.90 km

3. Bogaswewa - Pulmuddai Road (NRC6)

This is project of Road Development Authority which was successfully delivered by CEC in 2010.

4.Tissa - Kirinda Road (NRC3)
Another Road Development Authority project in Southern Province completed in 2010. This project covered the road length of 14.20 km

5. JBIC Funded Improvements Road Project SL

This Road development project was successfully delivered by CEC in 2009. And this project covered the road length of 18.08 km.

6. Pottuvil - Panama Road
Road rehabilitation project, completed in year 2010.

SECTORS

Road Construction, Building construction, Asphalt plant, sourcing raw material



Consulting Engineer and & Contractors (Pvt) Ltd

No. 157A, Kynsey Road,
Colombo 08, Sri Lanka
Telephone : +94-11-2078245
| +94-11-2078246
Fax+94-11-2078243
Web:www.cec.lk/
Email : info@cec.lk | md@cec.lk

INTRODUCTION

Edward and Christie was established in 1979 as a Construction Company and is one the few contractors which carries the ICTAD Grade C1 clarification in the main fields of Building Construction and Highway Construction.

The Company has over 30 years experience and track record in the construction of Buildings, Roads, Bridges, Water Supply and Drainage Work, Canals etc. Respecting the emerging national need, Edward and Christie is committed to the rehabilitation and improvements of building and highway projects currently underway in Sri Lanka.

We have a well experienced team in the development of construction at very competitive prices, capable of meeting the demand well on time.

CURRENT AND ONGOING PROJECTS

- 1. Anamaduwa Uswewa Galgamuwa (B019) Road
- 2. Rehabilitation and Improvements to Seeduwa Katunayake Road and Seeduwa - Udugampola Road from
- 3. Improvements to Wattala Mahara Road
- 4. Asian Development Bank Funded Northern Road Connectivity Project
- 5. Improvements to Storm Water Drains in Catchment 2 & 3, Marine Drive.
- 6. South Eastern University of Sri Lanka development project - Phase 1 B Construction of Girls Hostel Complex at Oluvil
- 7. Design and construction of building complex for four storied building for Information Technology Centre at the Trincomalee Campus, Eastern University
- 8. Construction of building complex for Faculty of Technology under South Eastern University of Sri Lanka development project - Phase 1A

- 9. Construction of administration building and premises development Katunayake new aviation project.
- 10. Road Package Under Deyata Kirula Program 2012. Anuradhapura
- 11. Flood Damage Repairs to Balaluwewa - Andarawewa Road
- 12. ADB Funded Rehabilitation and Improvements of Kurunegala, Padeniya Road
- 13. Widening and Improving Sigiriya - Illukwewa – Moragaswewa Road



 **Edward and Christie**
Head Office
Edward and Christie.
No. 64/10, Nawala Road,
Nugegoda, Sri Lanka.
Phone : +94 011-2812991
Fax : +94 011-2812441
Email : edchrist@sltnet.lk

Branch Office & Workshop
270, Giriulla Road
Katana Sri Lanka.
Phone : +94 031-2240566, 031-2241840
Fax : +94 031-2240566
Email : arewwala@sltnet.lk

INTRODUCTION

Engineering & Laboratory Services (Pvt) Ltd proudly announce to all esteemed Professionals, Consultants and Contractors involved in the Construction Industry of the establishment of a well-equipped material testing and quality control laboratory to meet all such requirements of the industry in the new millennium.

This modern laboratory was added as a part of their continuous effort to ensure that the construction industry in Sri Lanka would get, updated technological support, in the fields that ELS specialise. It is with the hope of achieving this goal that they set up this laboratory equipped with electronic and computer controlled systems with the provisions of the Advanced Technology. These facilities support their team of experts to perform

the necessary tests on soil, concrete, asphalt and other construction materials .All manner of field tests, including plate load tests, percolation tests, full scale slab, beam and foundation load tests are carried out with accuracy and efficiency. The pile load tests ELS undertake and include static, dynamic and pile integrity tests. Furthermore, we conduct special chemical laboratory tests for water, aggregates and soil from construction sites. A well-experienced professional team of Engineers & technicians are available to cater to all your material, foundation and geotechnical engineering requirements. ELS maintain a sufficient number of machinery and an efficient work force of over 800 employees to meet the varying challenges of the industry.

ELS speak of their Geotechnical Investigation Division with great pride, for it is equipped to provide services that

encompass every need of Geotechnical Engineers. Not only do we possess the necessary tools to handle any kind of Geotechnical drilling on shore or off shore, we also offer total investigation solutions by handling all field tests; carried out in bore holes, like: pressure test, pump test, permeability tests, vane shear tests in addition to SPT. Furthermore, we take on the challenge of introducing any new test required by any consultant.

ELS is experienced in supply and installing inclinometers, piezo meters, settlement plates and monitoring for major construction projects in Sri Lanka and overseas. Ceylinco celestial towers, southern transport development project, Colombo Katunayake expressway project are few projects where ELS has done instrumenting and monitoring. Such is their capability for soil, asphalt & concrete testing, and accurate, on-time reporting



procedure, that ELS's expertise has been sought in a number of massive projects overseas, such as the Development of the Male International Airport in the Republic of Maldives, Rebuilding a number of Tsunami damaged Maldivian Atolls, and geotechnical investigations and soil tests for the Sri Lankan Government bodies like Road Development Authority, Sri Lanka Ports Authority etc and a number of Telecommunication giants in projects island wide

ICONIC PROJETS

1. Casting, supply and driving of precast piles of Kurunagala Water Supply Project



2. Driving precast piles at STDP Pinnaduwa to Matara

3. Supply and driving piles precast bridge across Pulunanoya in Naththndiya

4. Precast piles for proposed refurbishment and cool room at Paliyagoda

5. Casting and driving of RCC Driven Piles for bridge no 4 in Eastern Province

6. Precast piles foundation for proposed Mercedes Benz Center

7. Ice Making plant at Dikovita, Fishery Harbour project – stage 2

8. Construction of pile Foundation for 2 Nos Towers of Aniyakanda to Kopiyawatta

9. Driving of Precast piles for Southern Transport Development Project.

10. Precast piling works for Kottawa Bridge

SECTORS

Roads & Highways, High rise buildings & factory buildings, Dams & Bunds, Tower foundations, Tunnels, Bridges, Boat yards, Harbour works including off shore drilling, Container yards, Water Supply projects



ELS Construction (Pvt) Ltd
62/3, Neelammahara Road, Katuwawala, Boralessgamuwa, Sri Lanka
Tel : +94-11-4309494 / 2517037, 2517365 / 2519727
Fax : +94-11-2509806
e-mail : els@elslanka.com
Web : www.elslanka.com

INTRODUCTION

HOVAEL Construction is a multi-faceted organization with their key focus into Civil Engineering, Electrical and Electro Mechanical sectors of the Construction Industry. With almost two decades of experience coupled with a strong financial background, and highly experienced professional staff, we have been recognized as one of the foremost players in the Industry; a dynamic force committed to delivering innovative turnkey solutions with a commitment to excellence, to an extensive clientele consisting of both Government and private sector organizations.

Their contribution to the growth of the Construction Industry has helped create many employment opportunities around the country and added to the infrastructure development significantly.

Hovel Construction's Services at a Glance: Design and construction of Civil engineering work, Mechanical and electrical Engineering work, Architectural services, Structural Design and Construction of Buildings. Hovel also specialize in Road work, Bridges, Buildings, Land development, Irrigation water supply and drainage projects, Mining, Quarrying and Crushing, Production of Asphalt concrete.

Hovael Construction have expanded their Support Services to include a well-equipped workshop for repair and maintenance of our own extensive fleet of plants and machinery; we also manage our own quarry crusher operations, asphalt concrete production units and concrete batching plants.

Hovel Construction commitment to excellence and use of technologically innovative methods has earned us ISO 9001:2000 certification for their Quality Management Systems. They are also graded as a C1 Contractor by ICTAD (Government Institution responsible for Construction, Training and Development) and hold a pioneer membership of NCASL (National Construction Association of Sri Lanka).

ICONIC PROJECTS

1. Road & a Bridge at Gampola Construction of road & a bridge on bored plies at Gampola. Road asphalt paved, storm water drainage

This project covered the scope of Asphalt road 1 Km, Bridge 6m span on 450 mm dia. bored piles to depth of 1.4 m, Concrete lined side drains, Box culverts and 2 pipe culverts ABC Road 1 km and Asphalt paving-road surface 1km. This is a project of UDA.

2. Kalubowila Hospital Building Project Four storied reinforced concrete structure of Hospital Building. This was a project of Central Engineering Consultancy Bureau (CECB).

3. Matara – Nilambe Water Supply Scheme Construction of Treatment Plant, R/F concrete channel, buildings, Ground Reservoir, DI pipe laying Storm Water Drainage component 2.5m bed width x 1.8m height x 2050m length R/F concrete channel Rock blasting, earthworks, dewatering, steel sheet piling R/F concrete culverts, Rubble masonry culverts and channels Gabion works & rubble packing.

4. Improvements to Storm Water Drainage in Badulla Town Contract No: 6121-4.

5. Construction of RCC drains in Badulla Municipal Council area and improvements to storm water drainage system. This was a project of Ministry of Housing and Plantation Infrastructure, UDLIHP.

6. Towns South of Colombo Water Supply Scheme Construction of 2 Nos. elevated Water Towers, 2 Nos. Ground Reservoirs. 3 Nos. Pump Houses & Pipe Laying, yard piping, building, site works, access road.



7. Neela Bemba Project, Puttalam Excavation below river bed, rock excavation, construction of concrete dam, headwork, spillway, flank bunds, canals, bridges access roads, road drainage etc.

SECTORS

Road work, Bridges, Buildings, Land development, Irrigation water supply and drainage projects, Mining, Quarrying and Crushing, Production of Asphalt concrete.

HOVAEL
Construction

Hovel Construction

245/47, Old Avissawella Road
Orugodawatte, Sri Lanka
TELEPHONE FAX
+94 -11- 2531636 / 39 +94 -11- 2531640 / 2572937
+94 -11- 2533046 / 48 +94 -11- 2532402
+94 -11- 2572936 / 39
+94 -11- 2533044
E-MAIL : swethe@hovael.com
construct@hovael.com

INTRODUCTION

Since its establishment in 1980, International Construction Consortium (Pvt) Ltd (ICC) has seen a rapid and sustained rise in its development to the present position as one of the leading Building & Civil Engineering organizations in Sri Lanka. Over the years, ICC has developed its systems to International Standards and has obtained ISO 9001, ISO 14001 & OSHAS 18001 accreditations. Today, ICC has the highest ICTAD grading "C1" for 4 Major disciplinarians of the construction industry, Viz Building, Water Supply & Drainage & Highways & Bridges. ICC, apart from its construction capability, owns and operates the following units.

- (a) Ready Mix Concrete Manufacturing & Supply Unit
- (b) Pre-stressed & Pre-cast concrete yards
- (c) Quarry & Crusher Operations
- (d) Carpentry & Joinery Workshop
- (e) Asphalt Concrete Manufacturing & Supply units
- (f) Concrete Block Production Units

- (g) DURRA Building Panels production unit
- (h) ACOTEC Precast Wall Panels production & Installation unit

Since 1999, ICC has further expanded its operations by moving into the field of Property Development with the establishment of fully owned subsidiary companies i.e. ICC Housing Pvt Ltd, Nivasi Developers (Pvt) Ltd and ICC Development Holding (Pvt) Ltd.

ICONIC PROJECTS

1. Badulla, Haliela and Ella Integrated Water Supply Project

Implementation of Budulla, Haliela and Ella Integrated Water Supply Project is an ongoing project by ICC for the client of Tetra Tech Inc. This project is due to be completed in 2017.

2. SPI

This project consists of construction of 20 stories building for Secretariat for Personal Identification at Battaramulla. This project for Ministry of Defense Urban is due to be completed in 2015.

3. 209 houses and 94 apartment project in Malambe

This project consists of building 209 houses and 94 apartments with all the infrastructure. This project for Nivasi Developers (Pvt) Ltd in Malambe is to be completed in 2016.

4. PHR

This ongoing project consisting of building New 154 key Resort Hotel in Tangalle. This is a project for the client, P.H. Resorts (Pvt) Ltd and due to be completed in 2015.

5. Relocation & Development of the Institute of Technology, University of Moratuwa. (ITUM)

This is another project undertaken by ICC for the client of Ministry of Higher Education in Diyagama and is due to be completed in 2016.

ONGOING PROJECTS

1. Rehabilitation/Improvement to Dambulla to Habarana Road

Rehabilitation /Improvement of the Dambulla Habarana Road is a project by RDA which was successfully completed by ICC in 2013.



2. Chaaya Bay

Construction of Chaaya Bay Beruwela Beruwela Holiday Resorts Ltd was successful completed and delivered in 2012.

3. Iceland

Project consisted of building 31 stories for Iceland residencies. This contract was made with a client of ICC Housing (Pvt) Ltd and has successfully completed in 2008.

4. Havelock City

This project consisted of building two 22 storied towers including a car park for 218 units. Havelock city is one of the major projects completed by ICC for Mireka Homes (Pvt) Ltd in 2014.

5. Central Hospital

This project for Asha Central Hospital covered building of a 14 storied hospital complex for The Central Hospital in Colombo 8. The project was successful completed in 2010.



SECTORS

Roads & Bridges, Housing Complexes, High Rise commercial buildings, International projects, Sports Institutional & Hotel Complexes, Power Station and Industrial Installation, Irrigation and Sanitation projects.

International Construction Consortium (Pvt) Ltd

70, S. De. S. Jayasinghe Mawatha Kohuwala, Nugegoda, Sri Lanka.
Tel : +94114400600
Fax : +94114400230
Web : www.icc-construct.com
E-mail : web@icc-construct.com

INTRODUCTION

IEL commenced its operations in 1993 with the vision of their Chairman/ Managing Director and the Director. A small Team of Engineers provided the support services at the inception. IEL received Membership of National Construction Association of Sri Lanka in January 1997.

Since then they have undertaken construction work in Sri Lanka and the Republic of Maldives. Through perseverance and dedication, and with the gradual buildup of the Engineering team, they managed to rise to the highest ICTAD Grading within a short span of 4 years in building construction. Similarly upgrading was possible in the fields of Water Supply & Drainage, Highways and Bridge Construction. IEL has been admitted to the Dun & Bradstreet Global Database as well. IEL has been assessed and certified for meeting the requirements of ISO 9001-2000 by SGS, United Kingdom, and has reached a prime position in the construction field through its highly successful operations in Sri Lanka and abroad.

IEL provides state of the art services for: Hotels and Bungalows in leisure industry Multi Stored Building Complexes, Housing Schemes, Office Complexes, Infra-Structure Development Works, Roads & Highways, Large

Overhead Tanks and Water Retaining Structure, Sumps and Water Distribution Systems, Sewer Treatment Plants and Sewer disposal systems, Water Supply and Drainage Systems, Factory Complexes, & School Buildings.

ICONIC PROJECTS

1. Turkish Village at Midigama

Construction of Residential Houses and Water Distribution System, Sewer Collection Network & Treatment Plant.

2. University of Kelaniya

Proposed Building Stage I for the Faculty of Commerce & Management Studies.

3. Construction of School Complex for Devapathiraja Maha Vidyalaya Rathgama

4. Construction of 1000m³ Capacity Elevated Water Towers at Panadura & Raigama

5. Tzu Chi Great House Village at Hambantota

6. Japan International Cooperation Systems

Construction of Road Network & Infrastructure for the Proposed Konesapury Friendship Village at Trincomalee.

7. Construction of factory & facility buildings Complex for Jeweltex (Pvt) Ltd., Maldives



8. Road Development Authority

Road Construction work at Kiribathgoda-Diyapalagoda



9. Ministry of Housing Environment, Republic of Maldives

Reconstruction of New Housing Units on Laa. Maabaidhoo and Tha. Madifushi

ONGOING PROJECTS

1. Eastern University Sri Lanka

Designing and Construction of building complex for five storied building for Faculty of Applied Science at the Trincomalee Campus.

2. Wanela Water supply scheme

Construction of 750m³ elevated water tower.

3. National Water Supply & Drainage Board

Construction of 750m³ Water Tower at Iginiyagala, 750m³ Water Tower at Namal Oya, 600m³ Water Tower Thottama, Staff

Quarters & Ancillary works, Integrated Water Supply Scheme for unserved areas of Ampara, District Phase III.

4. National Water Supply & Drainage Board

Construction of 750m³ Water Tower Central Camp, 1000m³ Water Tower Konesapuram, 1000m³ Water Tower Bakkiella, Staff quarters and Ancillary works, Integrated water supply scheme for un-served areas of Ampara District-phase III.

5. Construction of Four Storied Building for the Post Graduate Institute of English, The Open University – Nawala

6. Urban Development Authority

Designing and construction of District Secretariat building at Mannar Phase - 1.

SECTORS

Works, Roads & Highways, Complexes, Infrastructure, Water Supply and Drainage Systems, Factory Complexes, & School Buildings, Water Distribution Systems, Sewer Treatment Plants and Sewer disposal.



ISURU ENGINEERING (PTE) LTD

983, Pannipitiya Road, Battaramulla

Tel : +94 11 2787739/40

Fax : +94 11 2787747

Email : isurueng@slt.lk / pasqual@slt.lk

Web : www.isurueng.lk

INTRODUCTION

K. D. A. Weerasinghe (KDAW), is a civil construction company specializing in roads, highways, bridges, water supply, airport, dam and irrigation construction. Over the past 25 years KDAW has successfully completed over 250 multidisciplinary projects, some of which are iconic, such as the construction of the aprons and taxiways in the Bandaranaike International Airport and contributing to the construction of the Southern Expressway.

At present KDAW is equipped with a workforce of over 4000, which includes experienced and qualified civil, mechanical, chemical, mining, material and electrical engineers. Furthermore, being a forward and backward integrated company, all aggregate, concrete, asphalt and road concrete products are sourced via company operated quarries and plants. Currently KDAW operates 8 metal quarries, 9 crusher plants, 4 asphalt plants and 3 concrete batching plants which are strategically located across the country to supply the company's ongoing projects, ensuring a high level of efficiency. To further aid the construction activities and assure superior workmanship the company maintains a state-of-the-art heavy machinery fleet exceeding 500 units.

Company performance has been highly commended by their clients such as the Road Development Authority Sri Lanka, National Water Supply and Drainage Board, Airport & Aviation Services [SL] Limited, Josef Riepl(JR), Sumitomo Corporation, China National Aero-Technology Import & Export Corporation (CATIC), Taisei Corporation and consultants such as Lahmeyer International, Japan Airport Consultants, Engineering Science Inc, Mott Mac Donald's, SMEC, URS and Scott Wilson.

KDAW is also an ISO Certified Company as operations are conducted in Compliance to ISO 9001-Quality Management Systems (QMS) as well as ISO 14001 Environmental Management Systems (EMS) & ISO 18001 Occupational Health And Safety Management Systems (OHSAS). KDAW has proved their engineering excellence over the years in the following sectors and services.

ICONIC PROJECTS

1. KDAW & the Southern Expressway

In 2011, Sri Lanka opened its gates to its first expressway spanning from Colombo to Galle (Stage 1) of which KDAW was able to work on a section under the management of Taisei Corporation. The project was completed on time and to international standards and

KDAW was awarded a National ICTAD Award for Construction Performance in 2012. These 6 Asian Development Bank funded projects were recently completed on time with the highest standards.

2. Aprons, Taxiways & Runways of International & Domestic Airports

KDAW has maintained a longstanding relationship with the Airport & Aviation Services Sri Lanka (AASL) through the successful completion of the aprons, taxiways and runway of the Ratmalana Domestic Airport and the Bandaranaike International Airport.

3. Rehabilitation of the Historical Galle Fort

In 2011 KDAW was bestowed with the honor of conducting improvements and rehabilitation to the Galle Fort internal roads. The project was executed in 15 months which involved the re-surfacing of 5.8Km of roads with 1.9 million concrete blocks and 11,600 Kerbstones. The initial designs of the project involved asphalt overlaying. However, due to the archeological value of the Galle Fort the scope of work was changed to concrete paving blocks. The project was completed on time and KDAW won the ICTAD National Award for Construction Performance in 2012.



4. Vavuniya Surface Water Dam

KDAW is currently engaged in construction of an earth dam, which hopes to cater to the drinking water demand in the dry zone areas of Vavuniya. The 3km long dam with a height of 10.5m will include approximately 375,000m3 of earth work and the be first of its kind to be constructed in Sri Lanka with a Bentonite Slurry Cut-of Wall at the base of the dam. At completion it will have with a net catchment area of 42 sqkm and gross catchment of 185 sqkm. This mega project also includes the reforestation of 166 Hectares of vegetation.

ONGOING PROJECTS

1. Ruhunupura Water Supply Project

This ongoing project with a scope of UPVC/DI-250 Km(UPVC90-225mm/DI 80-225mm) is due to be completed in June 2017. This project for the National Water Supply and Drainage Board is Funded by the Commercial Bank of Ceylon.



2. Rehabilitation/Improvements Rahula Road in the Hambantota District.

This current project is covering 72KMs of a 5M wide road in the Hambantota District. This project for Road Development Authority is funded by the Asian Development Bank and is due to be completed in 2016.

3. Vaunia Surface Water Project

This is another water project undertaken by the KDAW for the National Water Supply and Drainage Board with the funding of Asian Development Bank. This water project covers the dam length of 2 KM and the estimated completion is in May 2016.

4. Rehabilitation /improvement to Rahula Road in the Galle District.

This ongoing project is covering 63KM with the road width of 5M and is due to be completed in July 2016. This is another project for the RDA and is funded by the Asian Development Bank.

5. Weligatta- Bandala Road Project

This project for RDA is due to be completed in April 2016. This project is covering 19.2 km with the road width of 7.2 m including 4 bridges.

SECTORS

Road and Construction, water and Drainage, AirPort Construction, Building construction, Bridge construction.



K.D.A Weerasinghe & CO.(PVT) LTD
8/16 Thalapathpitiya Road , Nugegoda
Sri Lanka
Tel : +94 0112835860-1-2
Fax : +94 0112835863
Web : www.kadw.lk
Email : kdaw@sltnet.lk
kdaw.publications@gmail.com

INTRODUCTION

Since its inception in 1942, K. D. Ebert & Sons has been executing various civil construction works in Sri Lanka. The First Managing Director/owner of the Company was Late Mr. K.D. Ebert who first began accepting sub contracts for Concrete Light Posts from the Pre-Cast yard which led him to be the first Sri Lankan to begin a firm for Casting Concrete Light Posts in 1947.

K.D. Ebert registered his company with the Public Works Department in 1950 and undertook construction work on diverse projects, such as Building Construction, Road Construction and Irrigation Works. Eventually, together with the experienced and qualified workforce, superior skills and deployment of reliable and efficient equipment K.D. Ebert & Sons developed its reputation.

Ultimately, K.D. Ebert & Sons expand as a K.D. Ebert & Sons Holdings (Pvt) Ltd with Government Registration by the Institute of Construction and Training and Development (ICTAD). Graded M1, the Company provides designing, developing, constructing services. K.D. Ebert & Sons Holdings is an ISO 9001—2000 Certified Company.

ICONIC PROJECTS

1. CHICO Treatment Plant, Nawagamuwa

This plant consists of an Intake, Desalting chamber flocculator, ground reservoir, high lift pump house and chemical house. The Company completed rapid sand filters, sludge drying beds and renovation of existing pump house to accommodate back wash pumps including all C/D1 pipes, specials, CI/D1 valves and DI manhole covers.

2. Courts Complex, Nugegoda

Two blocks each of four storied buildings. The Company did investigation for soil condition, design of all the structures and services. Zn/Al roofing sheets on steel frame with steel GI C purling and service included fire fitting, split type air conditioning, plumbing, drainage, electrical installation etc. Supply installation of two numbers of passenger elevators and transformer and generator with main panel and ATS panel, construction of sump, pump house, water tank and water distribution network and landscaping work.

3. International Buddhist Secretariat, Colombo

A three storied building with architectural features and four single storied blocks of kitchen, rest room, toilet and security room. Constructed with RCC column footing, column, beams, slabs, staircase and rubble strip foundation for walls. Colour cone cement pressed roofing tile on RCC portal frame with timber frame work, timber doors and windows and exposed rafter ceiling.

4. Institute of Policy Studies Building, Colombo

Excavation and earth work including 1.0m earth filling up to formation, RC column foundations, rubble foundation and plinth beams. RC walls, lift base and walls. Anti-termite treatment, RC structures and staircases, water proofing, Colourcon tile roof covering with timber frame work and steel trusses. Internal and external plumbing and drainage, electrical installation, water pump and landscaping.

5. Media Centre, Department of Government Information

Construction of ground floor and four upper floors with a total gross floor area of 3190m² consisting of site preparation,



framed, rubble foundation, water proofed RCC flat roof, zinc aluminium roofing sheet with insulation on steel frame work for the auditorium, cold water supply and re-location of the existing cold water supply line, drainage work, removal of existing septic tank and soakage pit and re-designing essential capacity of septic tank and soakage pit, electrical services, imported accessories, acoustic wall, ceiling panels and loop pile carpeting etc.

Specialised Services like firefighting and protection system, telephone outlets and air conditioning, passenger elevators, furniture and sound system for auditorium.

ONGOING PROJECTS

1. Transportation and Erection of Steel Super Structure and Immediate Approaches

58m long 2 span steel bridge construction including foundation and sub structure pier, steel structure, road work.

2. Thalduwa – Meewitigammana Road

Widening of the road to accommodate 3.5m width 2 lanes carriageway, with 0.5m hard shoulders and 0.5m soft shoulders on both sides. It will also include sub base, aggregate base course (ABC) overlay, asphalt binder course and wearing course, drainage and shoulder construction, reconstruction, repairing or widening of existing culverts, construction of new culverts. Road will be redesign as new race from 9+480 to 17+300 due to the adverse curve on existing road.

The carriageway will be rehabilitated with an average 200mm thick aggregate base course (ABC) layer, average 50mm thick asphalt concrete 75mm binder course and regulating course where necessary.

3. Mulative – Kokilai – Pulmudai Road



4. Chilaw – Wariyapola Road

Widening of carriageway to the required standard, construction of shoulders on either side of the road. The carriageway, will be rehabilitated with a 300mm thick sub-base layer, 200mm thick Aggregate Base Course (ABC) layer over the existing carriageway and 60mm thick Asphalt Concrete binder course and 40mm thick Asphalt concrete wearing course in road surfacing. In addition 600mm in width aggregate base course shall carry in soft shoulder.

The carriageway will be 6.2m in width and will consists of 3.1 wide two lanes. Asphalt surfacing hard shoulder 0.9m in width will be provided on both sides. A soft shoulder, 1.5m in width, will be constructed on either sides of the road.

SECTORS

Civil & Building, Highways & Bridges, Supply & Drainage Systems and Contracts.



KD Ebert & Sons Holdings (Pvt) Ltd

5/41, Madiwela Road, Embuldeniya, Nugegoda, Sri Lanka.

Tel : +94 11 4305359 & +94 11 2834655

Fax : +94 11 4305109

Web: www.kdebert.lk

Email: info@kdebert.lk

Contact Person: Mr. K.D. Indika – Chairman/Managing Director

INTRODUCTION

Kent Engineering was established in 1991 and is one of Sri Lanka’s largest providers of turnkey mechanical, electrical and plumbing engineering solutions. The Company has been involved with large development projects, both locally and internationally and is a provider of specialised mechanical, electrical and plumbing design and installation solutions that include hot and cold water systems, sewer and waste water systems, rain water and vent systems, fire protection and detection systems, electrical and ELV systems, gas systems, steam and compressed air systems, AC and mechanical ventilation systems and steel fabrication.

The Company’s portfolio includes high-rise apartment buildings, star class hotels, multi-storey office buildings, hospitals, garment factories, luxury homes,

large scale water supply schemes, sewer treatment plants, water purification plants, swimming pools and any kind of water features.

With a qualified and dedicated team of over 500 industry experts who are behind the Company has been able to deliver world class engineering solutions while staying abreast with global quality standards and best practices including the ISO 9001:2009,OHSAS 18001 and EMS 14001 standards. Kent is rated EM1 for plumbing, fire systems and electrical systems the highest rank set by the Institute of Construction Training and Development (ICTAD). Kent is the only EM1 graded MEP contractor in Sri Lanka to have all three above mentioned certificated from Sri Lanka Standards Association (SLSI).



ICONIC PROJECTS

- 1. Sino Lanka Office Building**
Design and construction of mechanical, electrical and plumbing systems.
- 2. Fairmount Residencies**
Design and construction of plumbing system.
- 3. Chaaya Tranz**
Design and construction of plumbing system.
- 4. Lanka Hospitals**
Design and construction of plumbing system.
- 5. Iconic Residencies**
Design and construction of plumbing, fire, LP gas and mechanical ventilation systems.

ONGOING PROJECTS

- 1. Avic Residencies**
Installation of electrical system.
- 2. Clear Point**
Design and construction of plumbing system.
- 3. Anilana Hotel - Trincomalee**
Installation of plumbing and gas systems.
- 4. Multi Storied Office Complex for the Western Province at Battaramulla**
Installation of plumbing system.

SECTORS

Plumbing and drainage system, firefighting and detection system, electrical and ELV system, mechanical ventilation and air conditioning system, gas system, steam and compressed air system, water treatment plant installation, swimming pool and other water installation, elevator and escalator system and special solar power generation Installation.



Kent Engineers (Pvt) Ltd.
27, Malwaththa Avenue, Kohuwala,
Nugegoda, Sri Lanka.
Tel : +94-11 282 5318, +94-11 281 6090,
+94-11 281 4107
Fax : +94-11 282 5319
Web : www.kentengineers.net
Email : www.kentengineers.net



INTRODUCTION

Komuthi Engineering Services started out in 1990 and was one of the first in the field to obtain ISO 9001:2008. They obtained this recognition due to the enthusiasm that was shown to quality and continuous commitment.

The main operational focus of Komuthi Engineering Services is to meet and exceed our clients’ requirements through innovation and teamwork and to promote industry excellence in the management of safety, quality, environment and human resources in every project we undertake.

Komuthi strongly believe that development of human resources is the development of the company. They believe that the company has an obligation to the community development and also they believe development by causing minimum harm to the environment.

Komuthi do not want to be an ordinary company and do only ordinary jobs. The company likes to enhance new knowledge and quality standard and move forward supporting the nation, country and our own planet.

Komuthi has successfully delivered a diverse range of construction projects for both the private and Government sector. They have developed loyal repeat business relationships through servicing all our clients projects whether large or small.

At Komuthi Engineering Services they try to cover key industry sectors which would be road construction, water supply, Drainage and Infrastructure Development. Their Projects are carried out in a way which ensures that it meets the best levels for quality, safety and environmental management.



SECTORS

- Road Construction
- Water Supply
- Drainage Development
- Infrastructure Development



Komuthi Engineering Services (PVT) Ltd.
595 Nawala Road,
Rajagiriya, Sri Lanka
Tel : (94) 714302988
(94) 112887732
(94) 112884963
(94) 112884964
Email : kes@slt.net
komuthi@gmail.com
Web : http://www.komuthi.com

INTRODUCTION

L. H. Piyasena & Company (Private) Limited is a Civil Engineering Company in Sri Lanka with over five decades of experience in the field of building construction. The Company first commenced operations as a partnership in 1960. With the expansion of resources and clientele base, the partnership incorporated into a Limited Liability Company in 1987. The Company has now become synonymous with the top ranking contractors of the building construction industry in Sri Lanka. Throughout the years, the Company has successfully.

Completed hundreds of building projects, both large and medium scale, and in commercial as well as residential sectors.

The Company was awarded these projects on the credibility gained from clientele for

adhering to the principle of constructing solid and durable structures on one aspect, while maintaining aesthetic appearance on the other aspect. By utilizing quality material and employing skilled workforce from foundation to the finishes it was possible to deliver outstanding and long lasting finishes on the constructed buildings. Hence, the Company has maintained to date, a firm reputation with the clientele for consistency in superior workmanship.

With these strategies in view, the Company obtained ICTAD C1 category registration and ISO 9001, 2008 Certification for Building Construction and Civil Engineering works. Furthermore, the Company has continuously been equipping modern construction.

Machinery, vehicles, plants and tools and building up professional and skilled manpower resources to undertake projects

of any magnitude. Currently, the Company has a workforce of over 2000 personnel; consisting 500 skilled workers in various vocations. In addition, the Company owns and operates two metal quarries and one factory for manufacturing interlocking, paving, solid and hollow blocks.

With the spirit of growth in mind, L. H. Piyasena & Company (Private) Limited is currently negotiating with clientele from overseas to undertake large and complex projects in their countries.

ICONIC PROJECTS

1. MARINE CITY Mixed Development Project at no 46, Station Road, Dehiwala

This major project covered building of constructing of 18 story luxury apartments and commercial complex in Dehiwala.

2. Office & Showroom Complex at no 423, Galle Road, Colombo 3.

This project in Galle road included constructing 8 story building area of Area : 5,460 sq.m (58,771 sq.ft). This project was completed in year 2012.

3. Office Complex at no 288, Sri Jayawardenapura Mw, Kotte

Office building for D.P.Jayasinghe Piling Co (Pvt) Ltd, in Sri Jayawardenapura is another successful project completed. This building includes Basement, ground floor and 10th floor. This project was successfully completed in 2015.

4. Show Room & Office Building At 231, Nawala Road, Nugegoda

Hesperus Marketing Nawala showroom and office building was another project undertaken by L H Piyasena. This building covers Total Floor Area: 5,460 sq.m and was successfully completed in 2010.

5. Computer Training Centre, No 456, R.A.DeMelMawatha, Colombo 3.

Computer training center in the R A D Mel Mawath is another recent project successfully completed by L H Piyasena Construction. This project covered area of 3,101 sq.m (28804 sq.ft) and delivered in 2015.



ONGOING PROJECTS

1. Office Building Project at no 300, havlock Road, Kirulapone, Nugegoda.

This is a project of Lotus Holding (Pvt) Ltd, which is currently under construction by L H Piyasena company.

2. Apartment Complex At No 24, Inner Fair Line, Dehiwala

This apartment project is a project in Dehiwala to be delivered to client Inne Fair Line.

3. Botique-Hotel- No.119-Galle-Road, Hikkaduwa-

4. Apartment Complex, No 43, Station Road, Dehiwala.

5. Office and Residential Building Complex at no: 5, 9th Lane, Nawala

6. Office Building No:49, Alfred House Garden, Colombo 3

7. Spa & Resort building at Weerawila

8. Office and Apartment Complex at No: 492, R.A.De Mel Mawatha, Colombo 3

SECTORS

Building construction



L.H. PIYASENA AND COMPANY (PVT) LTD.

151, Nawala Road, Narahenpita, Colombo 05, Sri Lanka.

Tel : +94 112 580524, +94 112589082

Fax : +94 112 368000, +94 112500819

Web : WWW.lhpiyasena.lk

E-mail : info@lhpiyasena.lk



INTRODUCTION

With 35 years of construction excellence, Link Engineering Private Limited is an accredited C1 graded constructor in Sri Lanka and a subsidiary of the international diversified conglomerate, Blue Ocean Group which is involved in real estate, construction and engineering, education, household and garments and holidays.

Link Engineering specialises in creating architectural building designs and undertakes the development of high quality residential, commercial, industrial and governmental constructions backed by a team of experienced experts who offer services needed for construction and development.

The Company owns and operates an aluminium fabrication factory, concrete batching plant and carpentry factory and showroom.

Link Engineering is an ISO certified company which means that all products are double checked by the SLS Institute and given the ISO seal of approval. Also, the raw materials that go into the Company's products come only from ISO

certified suppliers from all over the world assuring the quality, reliability and safety of end products.

ICONIC PROJECTS

1. Kandalama 5-Star Hotel - Habarana

The seven-storey Kandalama Hotel has been built of Reinforced Concrete (RCC) and brick in-filled panels. The paints used blends with its natural surroundings. Ceramic tiles, granites and cut and polished cement panels have been paved on the floor area. Link Engineering completed not only the building of Kandalama Hotel, but also its connected infrastructural projects such as internal and external plumbing, sewerage systems, sewerage treatment plant, landscaping, swimming pools, fire emergency systems, telecommunication and electricity system.

The company received many awards for building this hotel like the ICTAD National Award for Construction Excellence for the year 1993 and IFAWPCA Silver Award for Building Construction for the year 2002.

2. Heritance Tea Factory Hotel

In 1999 Link Engineering undertook the conversion of an old tea factory in the Hill Country into an aesthetic tourist hotel owned and operated by the Aitken Spence Group. The hotel consists of 56 rooms with state-of-the-art amenities. The landscaping of the hotel was done to blend and harmonise with the regional environment. Reinforced concrete was used wherever necessary with stainless steel and beams to strengthen the entire structure. Modern architectural designs popularly used to build medium size country hotels were followed when designing this hotel.

The connected sub works including electricity systems, elevators, plumbing, fire extinguishing system, telecommunication system were also carried out by Link Engineering. This project helped the Company receive the Award of Merit by UNESCO Asia-Pacific Heritage in 2001 for Culture Heritage Conservation.

3. Kurunegala-Padeniya Road

Link Engineering rehabilitated and improved around 25.6 KM of the road from Kurunegala to Padeniya, which takes heavy traffic to Anuradhapura.

4. Ministry Of Environment and Natural Resources - Pitakotte

The seven-storey building was structured of RCC frames, solid earth blocks reinforced with cement, wood doors and windows. The roof was reinforced with steel framework and covered with Zn/Al colour bonded sheets. This building can be considered a post-modern benchmark of green building in Sri Lanka.

The building was designed and constructed to provide open space, natural ventilation and sun light. The materials used absorb high heat levels thereby reducing the internal temperature and each floor and the compound has space for tree planting.

5. Court Complex - Chavakachcheri

The project funded by the Asian Development Bank was awarded to the Company by the Secretary, Ministry of Justice. The construction was built of RCC structures, brick walls, tiled floors and Calicut tile roofing. The works included supplying connected services like plumbing and electricity systems.



ONGOING PROJECTS

1. Migrants Resource Centre, Sri Lanka Bureau of Foreign Employment - Rathnapura

The state-of-the-art six-storey Migrants Resource Centre project will comprise of a spacious basement, rooftop, office and accommodation facilities covering nearly 65,000 square meters.

2. New Homagama Court Complex

The construction of this project has been designed taking into account the scenic environment of the location. Comprising of 6,000 square meters the construction will utilise reinforced concrete rafts/strip foundations strengthened with concrete beams and columns.

3. Civil and Mechanical Engineering Complex, University of Jaffna

The Government of India through its Sri Lankan embassy granted the project to Link Engineering. The faculty, at Ariviyal

Nagar in Kilinochchi District, will comprise of two floors with four blocks, a court and an entrance lobby.

4. Skill Development Centre, Faculty of Agriculture, University of Jaffna

Adhering to the latest architectural designs, techniques, materials, and expertise, Link Engineering will construct the Centre which will comprise of two floors housing a state-of-the-art conference hall, library, IT centre and students' complex.

5. Blue Ocean Apartment Complex – Colombo

The project involves the construction of an 18 storied high-rise apartment complex consisting of 72 three to four bedroom apartments.

SECTORS

Construction specialists in high-rise buildings, industrial complexes, hotels, roads and highways, bridges, water supply and sewerage, irrigation, land reclamation, electrical engineering and plumbing, power plant construction, steel fabrication, landscaping and engineering design.

Suppliers of mixed instant concretes, aluminium fabrication and installation, carpentry products, corporate interior designing and refurbishment projects.



Link Engineering (Pvt) Limited.

32, 2nd Floor, Galle Road, Dehiwala, Sri Lanka.

Tel : +94 112 722 217,
+94 777 546 546

Fax : +94 112 722 204

Web : www.link.lk

Email : chairman@link.lk

Contact Person: Mr. S. Thumilan,
(Chairman)

INTRODUCTION

Since its establishment in 1984, Maga Engineering has made an indelible imprint as the market leader and a model construction company of the country. It has provided leadership to the construction industry of Sri Lanka by achieving exceptional growth, quality of work and timely delivery whilst setting benchmarks in sustainability and safety & environmental performance. This is evident by the company being named the 04th Most Accountable Corporate Entity in Sri Lanka by the leading business magazine LMD and being the only construction firm to receive the Business Superbrands status. Furthermore, the Institution of Engineers Sri Lanka honoured the company with the institution's first ever Engineering Excellence Award in 2008.

Maga Engineering has won a record 73 National Construction Awards from the Construction Industry Development Authority (CIDA) and the prestigious International Federation of Asian and

Western Pacific Contractors Association (IFAWPCA) Gold Medal for the construction of Apollo Hospital Colombo in 2002. In 2014, Maga received the Platinum Rating in Sri Lanka's Corporate Accountability Rating, in recognition of its sustainable construction practices as well as its continuous commitment to social, environmental and financial accountability. Maga is also the first construction company in Sri Lanka to be certified under an integrated Health, Safety & Environment Management System (under ISO14001 and OHSAS18001) and to become an Organisation Stakeholder in the Global Reporting Initiative's Stakeholder Council.

The company is presently constructing the tallest building in Sri Lanka, the 47-Storey Grand Hyatt Hotel in Colombo and has completed one of the longest road rehabilitation projects, the 158km long Matara-Wellawaya Road. In 2013/14, the company carried out work of building projects with a total floor area of over 3 million sqft, road networks totalling over 610km in length, water projects serving over 310,000 residents, along with several bridges and flyovers.

ICONIC PROJECTS

1. Head Quarters Building for Sri Lanka Customs at Chalmers Quay, Colombo - Fort

In May 2012, Maga completed the construction of the New Headquarters of the Sri Lanka Customs, a large-scale building project whose main civil works was completed at a value of LKR 4.1 Billion. The 13-storey, 430,000sqft floor building includes office spaces, a state-of-the-art seminar room, a restaurant, comprehensive recreational and car parking facilities, a modern Building Management System (BMS) and state-of-the-art aluminum facade which accentuates its presence as a modern architectural landmark in the city.

2. Matara Wellawaya Road

The Matara Wellawaya road is a vital link that connects the western and southern coasts with the eastern coast. Maga successfully completed the project on 10 September 2009, six weeks ahead of the scheduled completion date. The project

has garnered the praise of the European Union, its funding agency, for setting a benchmark for local contractors of the region in the successful delivery of large scale infrastructure development projects.

3. Lanka Hospitals (Formerly Apollo Hospital)

Apollo Hospital Colombo is a landmark facility spread over 7 acres. Setting the benchmark in Sri Lankan healthcare industry, the hospital contains state-of-the-art cardiac, neurological and orthopaedic care facilities, 4 Dedicated Intensive Care Units (ICU) and emergency service care facilities. The project was completed in 2002, and won Maga the prestigious IFAWPCA Gold Medal for construction excellence.

4. Greater Kandy Water Supply Project

The 2nd Stage of the Greater Kandy Water Supply Project was one of the largest water supply and drainage projects to be carried out in the Central Province of Sri Lanka. It comprised both civil, electrical and mechanical work to construct 08 service reservoirs (including 3 elevated reservoirs/towers), 4 pump stations along with supply and installation of pumps and 30km of DI Transmission Mains and 88km of Distribution Mains.

ONGOING PROJECTS

1. Grand Hyatt Colombo Hotel

Located at the heart of the City and bordering the beautiful western coastline of the Indian Ocean, this 47-storey RCC framed structure will house the prestigious Grand Hyatt Colombo Hotel. The building will contain 2 basements of parking, hotel rooms, atriums, an expansive, high-ceiling restaurant, banquet rooms and other recreational facilities. The 475-room Hotel will feature 54 Suites, 265 King Rooms and 150 Twin Rooms within a total floor area of 1,110,000sqft.

2. Ambepussa – Galewela Road

The project aims to rehabilitate and extend a key segment of the Ambepussa Kurunegala Trincomalee (A-6) highway, one of the most vital branches of the



national highway network which traverses over important geographic areas of Sri Lanka of environmental, cultural, economic and social significance.

3. Clearpoint Residencies

Clearpoint Residencies is a unique, 47-Storey apartment complex which will become Sri Lanka's first sustainable high-rise whilst setting a global benchmark in becoming the world's tallest vertical garden. The building has a floor area of 56,220sqm.

4. NSBM Green University Town

The Green University Town is a landmark project by the National School of Business Management, one of the nation's premier degree schools. The University is currently being constructed at Pitipana, Homagama. The University will feature state-of-the-art lecture hall facilities, laboratories, libraries, modern auditoriums and cutting-edge tech labs, and once completed, will become the First Green University Town in South Asia.

SECTORS

Maga's core business focus lies in the design and construction of buildings, highways, bridges, water supply schemes, irrigation schemes, ports and other infrastructure. The company is proud to serve key market segments of real estate, healthcare, education, transport, information technology, agriculture and water supply, in partnership with both public and private stakeholders.



MÄGA
the saga of quality construction

Head Office

Maga Engineering (Pvt) Ltd

200, Nawala Road, Narahenpita,
Colombo 05

Sri Lanka

Tel: +94 11 2808835 - 2808844

Fax: +94 11 2808846 - 47

E-mail: maga@maga.lk

Web: www.maga.lk

INTRODUCTION

Nawaloka Construction Company Private Limited is a major player in the Sri Lanka building industry which has been in existence for over 68 years. Founded by the late Chairman Deshamanya H K Dharmadasa in the post-war-era, the organisation has earned valuable recognition in the building industry as a company that offers multi-disciplinary services to suit clients' requirements.

The Company holds C1 status for buildings, highways, roads and bridges works in the Institute of Construction Training and Development (ICTAD) grading and is a member of the National Construction Association of Sri Lanka (NCCASL). In addition the Company has been awarded the National Excellence Award nine consecutive times from 2005 to 2014.

Nawaloka Construction places great emphasis on meeting environmental standards as required by the Central

Environment Authority, and promotes green technology and design concepts during construction projects. In addition the Company also takes into consideration the safety and personal protection of workers and visitors to construction sites by maintaining the highest levels of security standards. As proof of that the Company has been awarded the ISO-9001:2008 Certification for Quality Management System, OHAS 18001:2007 for Occupational Health and Safety and ISO 14001:2004 for Environmental Systems. Under the stewardship of the Chairman, Mr Jayantha Dharmadasa and his team of professionals led by Kalana Alwis, Director/CEO, the Company is capable of providing total solutions for any local or international construction projects.

As a backward-integrated company, Nawaloka Construction has all necessary financial, professional and manpower resources. In addition supporting materials, plants and machinery from ready mix and asphalt plants, quarries and aluminium

fabrication plants, heavy machinery etc. are available in-house.

The Company also maintains its own training school in Ratmalana providing staff the opportunity to get exposed to latest equipment and skills. A Planning and Design Division of Nawaloka Construction Company was formed to fill the void of in-house designing services.

As part of its Corporate Social Responsibility, the Company funds and makes material donations to religious organisations, orphanages, hospitals and non-government organisation throughout Sri Lanka.

ICONIC PROJECTS

1. Wheat silo for PRIMA Ceylon, Trincomalee

The Prima Sri Lanka silo project in Trincomalee comprises of 50 silos 60-metres in height. This is a project of Prima Ceylon (Pvt) Ltd in Trincomalee and the project completion period was 24 months.

2. New Iraq Embassy

Renovating of Embassy of republic of Iraq in Colombo is another project successfully delivered by Nawaloka Construction for the Embassy of Republic of Iraq Sri Lanka. This project was completed in the year of 2014.

3. Highways Secretariat (RDA), Battaramulla

This is a project of the Road Developing Authority in Battaramulla, and was delivered by Nawaloka construction in 18 Months of the contract period.

4. Cargills Super Market Complex – Jaffna.

Construction of Commercial Development for Cargills (Ceylon) PLC at Jaffna was another major project delivered by Nawaloka for Cargills (Ceylon) PLC. This project was successfully delivered in 2014.

5. Rehabilitation of Roads Galigamuwa, Ruwanwella, Karawanella .

Rehabilitation of Galigamuwa –Ruwanwella Karawanella Road was another completed project by Nawaloka for the Road Development Authority. This project was completed in 30 months.



ONGOING PROJECTS

1. Waterfront Integrated Resorts, Colombo 2

The proposed Waterfront Integrated Resorts at Colombo 02, is a current project undertaken by Nawaloka as a joint venture with their client Waterfront Properties (Pvt) Ltd. This project is due to be completed in 48 Months.

2. Vakkaru Island Resort, Maldives

Construction of Vakkaru Island Resort is another major overseas project currently undergoing by Nawaloka Construction for ESZY Holding PVT Limited. This project is to be delivered in 20 months.

3. Razavi Medical Complex, National Cancer Institute, Maharagama

The proposed Razavi Medical Complex at Maharagama is another project under construction. This is a project of Prima Ceylon (Pvt) Ltd and is due to be completed in 24 months.

4. Rehabilitation of Roads, Warakapola and Anguruwella

This project is an on-going road project undertaken by Nawaloka for the Road Development Authority. This project is due to be completed in 24 months.



SECTORS

Specialists in the construction of buildings, bridges, roads and highways, irrigation and land drainage, water supply and drainage, civil engineering, infrastructure development and harbour construction.



Nawaloka Construction Company Private Limited
115, Sir James Peiris Mawatha, Colombo 2, Sri Lanka.
Tel : +94 11 555 1111 & +94 11 555 1122
Fax : +94 11 533 7788
Web : www.nawalokaconstructions.com
Email : construction@nawaloka.net

INTRODUCTION

NEM Construction began operations in 1980 and is a leading contractor for earth-moving, highway construction, water supply, drainage, irrigation and land reclamation. The Company is an ICTAD C-1 Classified Company for highways, irrigation, land drainage etc. and is the only company in Sri Lanka with C-1 Classification for dredging and reclamation.

A leading civil engineering contractor in Sri Lanka with highest ICTAD Classification and ISO 9001: 2008 Certification, the organisation has expertise in design and technical know-how with flexibility to blend innovation into service of highest standards in

meeting the needs of every individual client.

NEM identifies the specific needs and expectations of customers and provides them with the best cost effective solutions, with emphasis on speed, precision and efficiency while adhering strictly to quality and safety standards.

The Company observes that the nature and extent of the large number of projects successfully completed with the dedicated support of its competent staff has contributed extensively towards developing the national economy. In addition NEM has contributed towards upgrading the living conditions of Sri Lanka at all levels in an eco-friendly environment.

ICONIC PROJECTS

1. Southern Transport Development Project (Colombo – Matara Expressway) Dodangoda to Kurundugahahetekkama section

Subcontracted to construct a section of the Southern Expressway.

2. Industrial Parks

Katunayake Free Trade Zone, Biyagama Export Processing Zone, Horana Export Processing Zone, Koggala Export Processing Zone and Seethawaka Industrial Estate.

3. Container Yards & Play Grounds

Transware Logistics state-of-the-art yard at Tudella, Sherman Sons, container yard at Wattala for John Keells and Chandra Silva Playground in Rajagiriya.

4. Irrigation Dams/Canals

Parakrama Samudra Dam Rehabilitation, Kankaniyar Kulam Irrigation Scheme in Batticaloa District, Meiyankallukulam Irrigation Scheme in Batticaloa District, Akathimurippu Head Works in Mannar District, Walawe Left Bank Irrigation Improvement Project, Greater Colombo Flood Control Project, rehabilitation of irrigation schemes at Wayamba Province and rehabilitation of Gomankaduwa Tank.

5. Road Construction

Padeniya - Anuradhapura Road (subcontract), Colombo – Kandy Road (section of road), Gampola – Nuwara Eliya Road (section of road – subcontract),



Hingurakgoda – Batukotuwa – Medirigiriya Road, Wanduramba – Ethumale – Yakkatuwa (B454) Road, Labuduwa – Wanduramba – Sandarawala Road, Pelmadulla – Madampe Road (section of road – subcontract), Dambulla – Bakamuna – Kalagahawela Road, Mawanella – Aranayake – Horewela Road, Navatkuli – Kerativu – Mannar Road (A-32) (section of road), Minuwangoda – Gampaha – Miriswatte Road and Ja-Ela – Ekala – Gampaha Road.

Madampe Road, Hanwella - Urapola Road, Hanguranketha - Adhikarigama Road, Negombo - Girulla Road, Thalagodapitiya - Yatawatte Road, Ranbukkana - Mawanella Road, Kegalle - Bulathkopitiya - Karawanella Road and Ja-Ela - Ekala - Gampaha - Yakkala Road.

SECTORS

Civil engineering constructors who undertake the building of roads, highways, expressways, dams, canals, high-rise buildings, industrial parks, container yards, sewerage treatments plants, factories, power plants, luxury homes and apartment complexes, earth filling and land development works, revetments and groynes.

ONGOING PROJECTS

1. Expressways

Main subcontractor for Colombo – Katunayake Expressway Project.

2. Highways

Kandy - Jaffna A-09 Road (50 km), Pannala - Kuliyaipitya - Hettipola Road, Thennekumbura - Kandehandiya Road (subcontract), Kurunegala - Narammala



NEM Construction (Pvt) Ltd.

629, Baseline Road, Colombo 9, Sri Lanka.

Tel : +94 11 2671814 & +94 11 2672071

Fax : +94 11 2685132

Web: www.nemconstruction.com

Email: nemcons@sltnet.lk

INTRODUCTION

Since 1996 Nuwani Construction (Pvt) Ltd provides a full range of professional services in industrial, commercial, civil, and residential construction projects throughout Sri Lanka. Over the past 19 years we have successfully completed over 100 projects for international and local clients. We have built facilities for electronic chip manufacturing, fully automated beverage production, state of the art garments production, cigar manufacturing, mass scale printing, tile and bath-ware production, state of the art cool rooms, logistics centers, cement fiber roof sheet production and many more multidisciplinary industrial projects.

We have also successfully completed five to ten storied commercial buildings for universities, schools, housing schemes and office complexes. Our civil works include large scale land development, earth work, retaining walls, waste water treatment plants, water retaining structures, and shoring works. We have also completed hotels and resorts for foreign and local clients. Apart for that we have also completed major residential construction projects for high end foreign and local clients.

The company employs professional staff consisting of project managers, engineers, land surveyors, quantity surveyors, technical officers and supervisors. The company has engaged over 350 persons to perform the construction activities. Our staff maintains a strong connection and a good relationship with architects, engineers and clients for whom projects have been delivered successfully completed on schedule. The company also has over 250 vehicles, plants and equipments and is served by qualified mechanical engineering team based at our maintenance and repair center at Kadawatha. We have achieved ISO 9001:2008 Quality Management Systems (QMS) and also in the process of achieving ISO 14001 Environmental Management Systems (EMS) and ISO 18001 Occupational Health and Safety Management Systems (OSHAS). We believe in on time delivery with zero complaints.

The key to our continuous development and improvement is with the targeted projects, complete customer satisfaction, repeat business and excellent referrals from previous projects.

ICONIC PROJECTS

1. Vavuniya Apparels

After the 25 years of bitter conflict in the Northern Province we were the first to setup a state of the art garments manufacturing huge facility in Vavuniya. The project cost was over USD 20million, which includes a fully air conditioned floor area of 300,000SFt. The facility includes water treatment, waste water and sewer treatment, centralized air conditioning system and road network on a 20 acre land. The facility caters for over 3500 workforce in the region.

2. Wickramaratne Sisilco (Pvt) Ltd

In the South Asian region, largest state of the art cool room facility was constructed with over Rs.700 million investment. The project contains blast freezer rooms, cool room racking, and waste water treatment facilities located at Paliyegoda.

3. Public Servants Housing Scheme at Galle

Construction of 10 storied 1500 units public servants housing scheme with waste water treatment plant and external work for MTD Malaysia.

4. Variosystems (Pvt) Ltd

In collaboration with USA and Switzerland Variosystems Sri Lanka is a ultra modern electronic chips manufacturing facility constructed at Badalgama. The 17 acre land consists a main factory (80,000SFt), solar harvesting (1MW), hostels, playgrounds, waste water treatment plant, and 1 acre man made pond for ground water recharging. The project was awarded with Sri Lanka Green Building Council Platinum status for it's environmental friendly construction practices. The project has been awarded with National Award for Green Construction Excellence 2014.

5. Aitken Spence Printing (Pvt) Ltd

State of the art printing facility with USA Green Building Council Gold status is another environmental friendly construction project carried out at Mawaramandiya.



ONGOING PROJECTS

1. United Tobacco Processing (Pvt) Ltd

Belgium owned tobacco processing facility with 40,000SFt mobile racking cool rooms is a flagship project of Jcortes.

2. Hayles Global Beverages (Pvt) Ltd

Instant tea manufacturing facility is under construction in the beautiful hills of Hatton. The facility is to cater for foreign

markets. The project consists of cut and leveling of 4 acre hilltop, 1km long access road through the tea plantation, 80,00SFt main plant, ancillary buildings, two 600,000Lt water tanks and external works.

3. El-Toro Roofing Product (Pvt) Ltd

Cement fiber roofing sheet production facility with German technology, the project is located on a 50 acre land in Chilaw. The project consists main plant, stores, ancillary building, staff quarters, and road network.

4. Hayles Free Zone Ltd

100,000SF state of the art logistic facility with super flat floor construction at Katunayake BOI zone.



SECTORS

Building Construction, Steel Fabrication, Road Construction, Water Retaining Structures, Land Development and Earth Work.



Nuwani Construction (Pvt) Ltd

90, Hospital Road, Kiribathgoda, Sri Lanka
Tel: (+94) 11-2910105
Fax: (+94) 11-4813041
Web: www.nuwani.lk
Email: info@nuwani.lk

INTRODUCTION

The company started its operations in 1995 in order to cater the growing demand for quality constructions. We primarily started civil construction with ED Zublin AG in Central Bank extension project as a sub-contractor, followed by many other local & international clients. Their scope of work goes beyond earth works, structural concrete works, buildings, bridges, water towers, water treatment plants, heavy steel fabrication & erections, mechanical maintenance works etc. Additionally company has established a machine rental department for hiring idle resources such as heavy machinery, equipment, tools, form work material etc. RR Construction is striving to achieve their highest degree of customer satisfaction at correct time & correct cost using appropriate technology.

RR Construction has around 500 workers that are capable in achieving any difficult milestone with pleasant attitudes proven around 16 years of history. Company has successfully completed several projects such as water retaining structures, bridges, multi storied buildings, roads, dredging & reclamation work, rock revetment etc., during the last 16 years.

ICONIC PROJECTS

1. Colombo Port Expansion Project – Harbour Infrastructure works – Service Road and Paving Works

This project for Sri Lanka Port Authority was successfully completed within 15 months. The contract included construction of service roads and paving works in Colombo Port.

2. Construction of Matara Mahanama Bridge

The contract included construction of a concrete bridge over Nilwala River in Matara town. The bridge is 116.4 m long with 4 spans (02 abutments & 03 piers). It is erected on 900 mm board piles & well foundations. The super structure is comprised of site pre-casted, incrementally pre stressed concrete girders. This work was funded by the Korean government through KOICA.

3. Construction Of Water Treatment Plant -Ampara

The contract included construction of filter building, filters ,flocclulates & treatment plant , overhead water tower, sludge holding tank, sludge thickener, etc. in Ampara district. The capacity of the plant is 172,000.00 cubic meters per day. This work was funded by the Australian funding agency through Autokompu.

4. Oluvil Port Project

The contract included coastal protection work and construction of the Light House road. This is a project of Sri Lanka Ports and successfully completed in a 6 month period in 2012.

5. Colombo Port Expansion Project – Building construction works

The contract included construction of a 45m high control tower, a two story pilot station, a two story crew accommodation, and a two story gate building. This project was successfully completed within a period of 9 months.

ONGOING PROJECTS

1. Rehabilitation / Improvement of A032 Navathkuli-Keraitivu-Mannar Road, “Sangupitiy” Bridge Mannar End Approach 4.5Km

This is a project of Road Development Authority in Mannar and due to be completed in 9 months.

2. Shifting of Utilities, Removal of Existing Bridge and Immediate Approches of Bridge No. 29/8 on Thiriwanketiya - Agalawatta Road (B421)

This is a project of Road Development and due to be completed in a period of 12 months.



3. Head Office Building

Head office building of RR Construction is another ongoing project by RR construction. The project is due to be completed in 18 months of time.

4. Asphalt overlaying, Concrete Block Paving, Drainage Construction, Road Sing and Road Markings at HendalaHunupitiya (B151) Road 0.000 + 4+000km

The client of the above project is the Road Development Authority and this project is due to be completed in 12 months.



SECTORS

Roads , Bridges, Water Supply and Drainage, Dredging & Reclamation, Buildings.



RR Construction (Pvt) Ltd

Main office: No. 865,
Dr. Danister de Silva Mawatha,
Colombo 09, Sri Lanka.
Tel : +94 11 2433427, 011-2918156
Fax : +94 11 2430161, 0112918157
Hotline : +94 72-2232998
Email : rrc@sltnet.lk

INTRODUCTION

Sanken Construction (Pvt) Ltd. have realised its vision “to be Sri Lanka’s premier construction service provider”. The construction major’s ambition has taken it sky-high, considering that the majority of skyscrapers in the country today have been constructed by Sanken Construction (Pvt) Ltd.

Commencing operations in 1977 by Mitsui Construction, the company’s brand name was established as FIAC Company “Sanken” in 1988. There has been no looking back since, as the company cemented its presence in the country and acquired the license to offer its services beyond Sri Lanka’s shores, with the setting up of Sanken Overseas. The overseas arm has subsequently established its footprint in Seychelles, Maldives, Kenya, Qatar, Tonga & etc., recording an annual business volume of US\$ 11.5million.

Sanken Construction has focused its core business and expertise in building construction for years, but in the recent years we have diversified into Civil Engineering, Piling and Infrastructure. Sanken has a reputed Skills Training Institute which trains and certifies skilled workers, enabling them to seek overseas employment while still holding down a job with the company on their return. This strategy has helped tether some of the industry’s best workers to Sanken Construction (Pvt) Ltd.

Sanken Construction (Pvt) Ltd., is recognized as a ‘Major Contractor’ by National

Contractors Association of Sri Lanka and as a Super Grade company by Construction Industry Development Authority, with “CS1” (highest) Super Grade on Building Construction and certified with ISO 9001:2008 QMS, OHSAS 18001:2007 and ISO 14001:2004 EMS Certification.

ICONIC PROJECTS

1. Design and Build for the 3 Star Business Hotel At No. 59, Ananda Coomaraswamy Mawatha, Colombo 03
Client Name - Sancity Hotels & Properties Limited, Commencement Date - Sep - 2011, Completion Date - June - 2014

2. "On 320" Condominium Project
Luxury Residential Apartments at 320, Union Place, Colombo 02

Client Name - John Keells Residential Properties, Commencement Date - June - 2011, Completion Date - Jan - 2015

3. "Emperor" Residential Tower At Crescat City, At No. 75A, Galle Road, Colombo 03

Client Name - Asian Hotels and Properties PLC, 77, Galle Road, Commencement Date - Aug - 2009, Completion Date - Oct - 2011



4. Shopping Complex At No. 101, D.S. Senanayake Mawatha,

Client Name - House of Fashion Garments (Pvt) Ltd, Commencement Date - May - 2011, Completion Date - Apr - 2013

5. Expansion and Refurbishment works to "The Kingsbury" (Former Ceylon Continental Hotel) at No. 48, Janadipathi Mawatha, Colombo 01
Client Name - The Kingsbury PLC



SECTORS

1. Proposed Dynasty Residential Apartment
Client Name - GRV Lanka (Private) Limited, Commencement Date - July - 2014, Completion Date - February - 2016

2. Construction of Proposed Multi storied Office Complex including Council Chamber for the Western Province - Provincial Council at Denzil Kobbakaduwa Mw, Battaramulla

Client Name - Western province Provincial Road Development, Commencement Date - July - 2014, Completion Date - July - 2017

3. Urban Regeneration Project - City of Colombo

Client Name - Ministry of Defence & Urban Development, Commencement Date - Aug-2014, Completion Date - Feb-2017

4. Proposed holiday bungalow for Golden Corals (Pvt) Ltd

Client Name - Golden Corals (Private) Ltd., Commencement Date - Sep - 2014, Completion Date - Dec - 2015

5. Building Works & Civil works for proposed 143 Rooms at Negombo Beach Resorts Complex, Negombo.

Client Name - Negombo Beach Resorts (Pvt) Ltd. Commencement Date - June - 2012, Completion Date - Dec - 2015



Sanken
CONSTRUCTION
sky's the limit

Sanken Construction (Pvt) Ltd

No, 295, Madampitiya Road,
Colombo 14,
Sri Lanka.

Telephone: 0094 112 52 29 39 / 0094 112 52 29 44
0094 112 52 22 93 / 0094 112 52 22 21
Fax: 0094 112 52 29 42
E-mail: sanken@sanken.lk
Web: www.sanken.lk
www.sankenconstruction.com



INTRODUCTION

Sathuta Builders was formed in late 1970's as a general construction contractor executing construction works of buildings, roads & irrigation canals & structures in Sri Lanka's largest multipurpose project , "Mahaweli Development Project". By the end of 2001, Sathuta was operating throughout Sri Lanka, as a leading construction firm.

A government registered Grade 1 construction company, Sathuta has a wealth of experience and technological expertise in all types of building & civil engineering construction. A highly skilled professional construction workforce which includes civil engineers, mechanical engineers, electrical engineers, architects and quantity surveyors, makes the

Company ready to undertake any type of challenging construction works to give right solutions.

Sathuta is the largest construction contractor in the North Western province of Sri Lanka with qualified, trained & experienced staff, modern fleet of construction machinery & equipment and financial strength.

The Company has received numerous awards such as " National Construction Excellence award", "National Construction Performance award", "Construction Excellence Award of the NCASL" and "Sri Lankan Entrepreneur of the year Award of the FCCISL" as a reputed construction firm & a business firm.

With comprehensive construction, engineering and development capability

and employing more than 2000 people, Sathuta has enviable breadth of skills and expertise at their fingertips.

ICONIC PROJECTS

- 1. Cardiology Unit - Teaching Hospital, Kurunegala
- 2. Library & Health Centre at Makandura
- 3. Building Complex for Ministry of Information & Media - Narahenpita
- 4. People's Bank Regional Head Office and Branch Office Building at Nugegoda

Building of 2992 m2 floor area consisting of a two storied reinforced concrete structure on column bases and rubble foundation.



- 5 storied building of 1590 m2 floor area consisting of a basement, four upper stories and a roof top as a reinforced concrete structure on a raft concrete foundation.
- 5. Peoples' Bank Southern Zonal Office and Branch Office Building at Matara

5 storied building (with a basement) of 2,630 sqm floor area consisting of a reinforced concrete frame with infill brick masonry walls. The building included very high quality floor finishes with granite & ceramic tiles. There were two

special features of the building, namely a helical stair case and a huge lotus flower design in the ground floor, which required innovative work techniques and superior workmanship.

SECTORS

Construction of buildings & Civil engineering projects, provision of consultancy services in construction related activities, production, supply & laying of Asphalt concrete and provision of Real-estate services.



Sathuta Builders (Pvt) Ltd
71 Kurunegala-Narammala-Madampe Road, Kurunegala
Sri Lanka.
Tel : +94 37 2221836
Fax : +94 37 222 1839
Web: www.sathuta.net
Email: chairman@secsl.lk
Contact Person: Mr. Sunil Rathnayake – Chairman/Managing Director



INTRODUCTION

In 1981, Sierra Construction (Pvt) Limited was incorporated to venture into the fields of Civil and Telecommunication Engineering, sectors that were hitherto solely dominated by foreign companies or by companies with foreign collaborations.

Within two decades, Sierra rose to become the market leader in telecommunication engineering. The boom in the construction industry opened up many opportunities for Sierra and the company has today evolved to great heights handling large construction projects relating to Water Supply & Sewerage, Power, Roads, Buildings, Irrigation and Pilling besides Civil & Telecommunication. We are at the highest grade C1 & EMI construction Company recognized by the government regulator CIDA in Sri Lanka.

Acknowledged for its expertise, reliability and superior quality of work, both locally and internationally, Sierra is today a prominent player in General Engineering Construction in Sri Lanka. The company has also gained from opportunities offered in global markets, with businesses established in India, Maldives, Qatar, & Myanmar.

From modest beginnings with just six individuals, Sierra today employs over 6,000 direct and indirect employees both here and abroad. The company takes pride in its highly motivated and talented workforce, the driving force behind its success.

Now in its third decade of operation, Sierra has picked up several awards and accolades along the way. It is an ISO accredited company. In furtherance of its corporate objectives Sierra is presently focused on implementing best practices of corporate governance and risk management practices within the company.

Today Sierra stands tall as a truly Sri Lankan company and acclaimed as a national asset. The company remains totally focused on its vision of being the preferred infrastructure development

partner in the region, identified by its customers and partners as integral to their success.

ICONIC PROJECTS

Water supply Project

1. Kalu Ganga Water Supply Project – Phase I Stage II The supply and Laying of DI Transmission mains and Secondary mains of Diameter from 1000MM to 800MM from Bandaragama to Piliyandala & in surrounding areas. Total value of the contract was US\$ 16.8 million. Completed in 2013.



2. Muttur Water Supply Project - Design & Construction of Head works, Raw Water Transmission Main and Treatment Plant & Supply & Laying of Treated Water Pumping Main Distribution Pipes and Construction of Elevated Water Towers. 8500cum/ day with high lifting pumping station and 160Km's of transmission & distribution, construction of towers and commissioning of equipment. Total value of the contract was US\$ 20.2million in both packages. Completed in 2013.

Highways & Bridges

3. Improvements to Mahaoya – Aralaganwila road from 0+000 to 24+000Km – the scope of work included 24Km's of road improvement work and construction of 132M bridge with associated civil works. Total value of the contract was US\$ 17.2 million and completed in October 2014.

Building construction

4. Construction of Eight storied Epilepsy unit at National Hospital Colombo 08. Total value of the contract is US\$ 12.6 million. Date of completion in October 2015.

Telecommunications

5. Supply, Installation, Testing, Commissioning of Optical circuits for the telecom operator Dialog comprising 4 stages. Total value of the contract is US\$ 18.2 million and stage 5 is in progress.

ONGOING PROJECTS

Water Supply Project

1. Towns East of Colombo Water Supply Project – Package 3, Supply and Laying of HDPE/DI pipes for Distribution Network in Kaduwela, Homagama, Padukka and Seethawaka DS Areas and the scope included distribution mains installation of boundary valves for DMA boundaries section valves, required pipe fittings including bridge and culvert crossing. Total transmission and distribution of 290Kms. Total value exceeds US\$ 70 million.

2. Vavuniya Water Supply Project - Construction of Water Treatment Plant and Storage Structures with Supply and



Installation of pumps, automation systems and M&E Equipment. Treatment plant capacity 12,000cum/day with high lift pumping station and outside structure 03 tower with ground sump. Total value of contract US\$ 15.8 million and scheduled to be completed in June 2016.

Highways & Bridges

3. Integrated road investment program – rehabilitation / improvements of rural roads in central Province, funded by the Asian Development Bank included 5 contract packages. Total value of the contract US\$ 65 million and scheduled date of completion in December 2017.

Building construction

4. Multi storied office complex for EPF secretariat in Colombo. The total floor area will be 49,221.9 Sq.m. approx. and the building height is 143m from the ground level. The office complex comprises of 32 suspended stories including 2 basements, 3 upper floor parkings. The total value of contract is approx US\$ 56.4 million. Scheduled date of completion June 2017.

5. Construction of 5 stars category 367 keys beach resort development in southern part of Sri Lanka. the scope of work included all facilities and requirements for an international star category hotel. Total value of the contract US\$ 42.8 million and the scheduled to be completed in August 2017.

SECTORS

Road Engineering, Civil Engineering, Pilling, Electrical Engineering, Water and Sewerage, Telecommunication.



sierra

Sierra Construction (Pvt.) Limited

No:23, Havelock Road
Colombo 05, Sri Lanka
Tel : (+94) 0112 584 681/3/4 (3 Lines)
(+94) 0112 598 171
Fax : (+94) 0112 598 175
Email : pperera@sierra.lk
Web : www.sierra.lk

INTRODUCTION

Established in 1985, Squire Mech Engineering (Pvt) Ltd, presently counts for 30 years of valuable experience in the field of Civil Engineering Construction. Our name is synonymous with efficiency, quality, punctuality and attention to detail. We have gained a substantial recognition as a trusted Civil Engineering Construction Company in Sri Lanka.

During the last three decades, Squire Mech Engineering Company has been growing significantly and its growth is propelled by the dynamic team with the Managing Director at the helm. The Corner stones of our success are the good rapport maintained with the clients of the public sector as well as the private sector and the outstanding quality of work. Since the year 2008, we are an ISO 9001:2008 certified company.

The rise of the company from small beginnings was meteoric. We work closely with our clientele and are closely maintaining awareness to the changing environment around us. With the availability of our professional team and blend of experience & youth and the appropriate resources, the company is prepared to take on any challenging assignment.

Their key to success is driven by the experience they acquired by constructing some of the most advanced facilities for our corporate, institutional and government clients. More and more of clients are turning towards them appreciating their distinctive ability in construction of buildings, roads, bridges, water supply schemes, telecommunication towers, highways and irrigation systems. We also handle allied civil engineering services and construction of electrical and mechanical installations including fabrications of structures

ICONIC PROJECTS

1. Nedunkerny – Oddusudan Elevated Tower & Civil Structures

Construction of Elevated Tower, Office, Quarters and other Civil Structures at Oddusudan Treatment Plant Site for Nedunkerny – Oddusudan Integrated Water Supply Scheme.

2. Pottuvil Base Hospital

Construction of Base Hospital in Pottuvil at Ampara District (Operating Theater & Wards). Year of completion: 2010.

3. Water Supply & Sewrage Systems For Akkaraipattu Base Hospital

Construction of Sewerage Scheme and Water Storage and Distribution system at Base Hospital, Akkaraipattu in Ampara District.

4. Pallamahu – Alkadively Road Rehabilitation of Pallamahu – Alkadively Road in Mannar District (0.00 – 3.00 Km). Year of completion 2014

5. Bridge At Athale – Boralugoda Road

Construction of Bridge at Boralugoda on Athale – Boralugoda Road for RDA. Year of completion: 2010

ONGOING PROJECTS

1. Construction And Commissioning Of 750 M3 Elevated Water Tower

Construction and commissioning of 750 M3 Elevated Water Tower at Serunuwara

2. Supplying, Delivery And Laying Of Pipes – Balangoda Wss

Supplying, Delivery and Laying of HDPE/DI Pipes, Fittings & Accessories for replacing of Raw Water Pumping



3. Sub Contract Of Civil & Architectural Works

Sub contract of civil & architectural works for construction of Water Treatment Plants and Storage Structures with supply and installation of Pumps, Automation Systems and M& E Equipment in Chilaw and Puttlam – Dry zone Urban Water and Sanitation Project.

4. Construction Of Operation Theatre Complex

Construction of five stories Operation Theatre Complex, MICU, Judicial Medical Unit & Sewerage System-at Base Hospital, Theldeniya.

5. Treatment Plant And Towers At Mahaoya

Construction of Treatment Plant and Towers at Mahaoya, Augmentation of Treatment Plant/Intake at Dehiattakandiya and construction of Sumps/Pump House and other civil works at Saddatissa, Konduwatuwana, Uhana, Damana, Hingurana and Pothuwil

SECTORS

Water supply schemes Construction of Hospitals Construction of Schools Other building construction Irrigation and Hydropower schemes Highways and Bridges Fabrication and erection of Telecommunication Towers.



Squire Mech Engineering (Pvt) Ltd

No. 135/1, Old Kottawa Road, Nawinna, Maharagama 10280, Sri Lanka.

Tel : +94 11 2851070,

+94 11 4306501,

+94 11 4306502

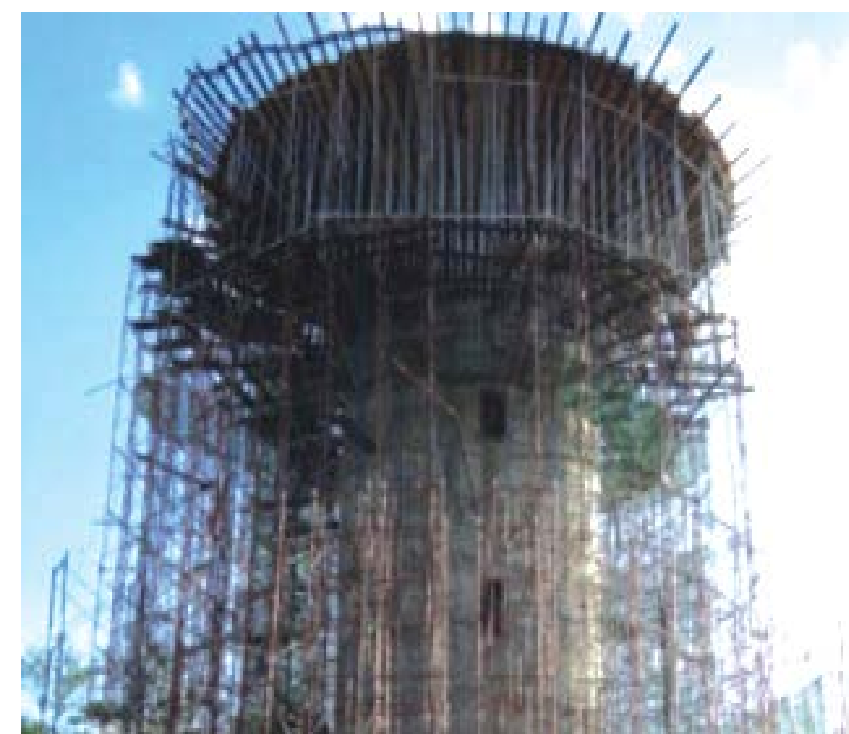
Fax : +94 11 2851069,

+94 11 2851199

Email : squiremech@sltnet.lk,

squiremech@squiremech.lk

Web : <http://www.squiremech.lk>



INTRODUCTION

SD & CC was established in 1971 as a State organization by an extra ordinary gazette notification of 29th March 1971 under the State Industrial Corporation Act No. 49 of 1957 to undertake heavy civil engineering construction works.

State Development & Construction Corporation (SD&CC) falls under the purview of Ministry of Construction, Engineering Services, Housing and Common Amenities.

SD&CC plays a major role in the development of Sri Lanka, especially in the upliftment of Infrastructure Construction. Various major engineering projects in the fields of Construction such as bridges, roads, highways, dams, irrigation deterrent schemes, hydro power tunnels and power houses, water supply and treatment works, multi storied buildings have been successfully completed by SD&CC.

The Contractor under Grading Scheme conducted by the Institute of Construction Training and Development (ICTAD), the National Regulating Body of Sri Lanka SD& CC is the leading local organization capable of constructing long span bridges, under design & build basis.

ICONIC PROJECTS

1. Bridges

SD&CC manufactures pre-tensioned Concrete beams up to 25.0m length and post-tensioned beams from 25.0m to 40.0m length.

The Road Development Authority (RDA) and the Mahaweli Authority of Sri Lanka (MASL) and Urban Development Authority (UDA) are the major clients for whom almost all the bridges have been constructed by SD&CC.

2. Hydro Power Tunnel and Power Project

Welioya tunnel of 1.25km in length was constructed for Department of Irrigation. Tunnel repair works and another works of Pollgolla, Canyon, Bowatena and Wimalasurendra tunnels. Canyon Hydro

Power Project with an installed capacity of 60 MW was constructed for Ceylon Electricity Board, with

- 4,000 meters long D-shaped fully concrete lined Tunnel of 3m diameter
- Surge chamber & tail race canal
- Power houses, switchyard and other ancillary service structures

3. Irrigation System In the field of Irrigation, SD & CC has undertaken the construction of wide range of structures,

- Diversion Dams
- Anicuts
- Earth bunds
- Down stream structures

4. Roads

SD&CC has undertaken the widening and improvement of existing roads and the construction of new roads to modern standards for Road Development Authority (RDA) and Mahaweli Authority of Sri Lanka (MASL). This includes a substantial quantum of road development in mountain terrain as well.

Access road to Kukule Ganga Hydro Power Project, Roads in Kothmale and Victoria Power Projects, 50km length of New Kandy Girandurukotte road are some of the major projects undertaken

5. Water Supply Project

SD&CC undertakes the construction of water supply projects, such as water towers, intakes, treatment plants pipe laying etc.

Improvement to Water Treatment Plant at Ambatale, ADB funded Anuradhapura water supply projects are some major projects undertaken by SD & CC.

6. Traffic Light Signal system

SD&CC undertakes maintenance and operation of existing traffic light signal system and installation of new systems. This new systems has already been implemented at three road junctions in suburbs of Colombo. The system has been extend for cities outside Colombo [Katugastota, Nittambuwa, and Matara etc.]

SECTORS

Bridges, roads, Highways, dams, Irrigation deterrent schemes, Hydro power tunnels and power houses, Water supply and treatment works, Multi storied buildings.



State Development & Construction Corporation

No.07, Borupana Road,
Dehiwala-Mount Lavinia, Sri Lanka
Website: <http://www.sdcc.lk>
Email: info@sdcc.lk
Tel: +94112632146
0777230506
Fax : +94112625907

INTRODUCTION

SEC is the only government construction organization certified with ISO 9001:2008. The ISO scope is for construction of building and civil engineering works including pilling roads and bridges, manufacture of pre-cast concrete products and prefabricated building, fabrication of metal frame and structures, manufacture of lime, clay bricks and timber products. We have obtained ISO 9001:2008 certification for providing of buildings, civil engineering and architectural consultancy and mechanical and electrical engineering services including bridges.

State Engineering Corporation of Sri Lanka, was established in 1962 and has been consistently ranked as one of the top Engineering and Construction Organizations in Sri Lanka.

Over the years State Engineering Corporation (SEC) have developed many innovative construction techniques that

became industry standards. Our integrated Software tools allow complex work sharing, sequencing and data reuse. Global high speed communication infrastructure keeps our personnel connected to tools, data and each other.

As the premier engineering organization in Sri Lanka, State Engineering Corporation is engaged in the following discipline of Engineering.

ICONIC PROJECTS

- 1. Construction of Proposed Five Storeyed Low Income Housing Scheme at Soysapura Stage II
- 2. Gunasinghepura Housing Scheme
- 3. Proposed housing project for Relocation of Underserved settlements, Angulana - Stage I
- 4. Proposed building stage II for department of Computer Science & Computer Unit of Uty of Ruhuna
- 5. Construction of Paddy Storage Warehouse at Maradagahamulla

ONGOING PROJECTS

- Engineering Design
- Construction
- Manufacturing
- Fabrication
- Project Management
- Information Management

The State Engineering Corporation today is the only local engineering organization in Sri Lanka, which offers the widest variety of architectural and engineering services under one roof with unmatched experience and capability. The Services are provided by the following groups of the organization;

- Building and Civil Engineering Construction Group
- Building and Civil Engineering Consultancy Group
- Mechanical and Electrical Engineering Group
- Construction Components Group
- Information Management Group



Each group is geared to undertake projects falling within their spheres or to work together with any other or all other groups to provide a complete DESIGN AND BUILD package.

State Engineering Corporation of Sri Lanka is a State sponsored corporation and functions under the Ministry of Construction & Engineering Services of Sri Lanka.

- 1. Clinical Ward complex at University of Rajarata
- 2. Raising up & Transport of the Collapsed Steel Bridge of RDA in Narthupana, Agalawattha
- 3. Replacing of Cast Iron pipe lines in Ananda Rajakaruna Mawatha & Serpentine Road.
- 4. Remedial work of Castlereigh Dam (Electro Mechanical work) of Ministry of Irrigation and Water Resources Management
- 5. Raising up & Transport of the Collapsed Steel Bridge at Narthupana,

Agalawattha . This is a project of Road Development Authority

- 6. Construction of Toll Gate and Toll faciilites of Athurugiriya Interchange at Athurugiriya. Client IS Road Development Authority
- 7. Provincial Road Carpetting Project Done By Special Operation Division. Client is Ministry of Economics & Development
- 8. Construction of Service Building at Pinnawala Zoological Garden at Pinawala (Substructure)
- 9. Construction of Housing Complex for Government Employee at Pallekele . Client is Chife Secretary, Central Provincial.
- 10. Isurupaya building complex expansion project at Baththaramulla. Client is ministry of education secretary

SECTORS

Road, Bridges, Building, Housing.



State Engineering Corporation Sri Lanka

No. 130, W.A.D. Ramanayake Mawatha, Colombo 02. Sri Lanka. 00200

Telephone: 0112 430 061

Fax: 011-2421262

www.secsl.lk

Email- Email: info@kdebert.lk

INTRODUCTION

Tissa Builders and Contractors is a specialist Road Construction Company and has successfully completed major road projects within past three decades. We have also completed many Bridge, Building and Irrigating projects.

The Company was established in 1975 and since its modest beginning as a Construction Company it has gained considerable experience and aptitude during the last 30 years and has been elevated to C1 Grade by ICTAD and is one of the major Civil engineering construction companies in Sri Lanka.

Construction demands unique and specialized skills, fine craftsmanship, advanced technical knowledge, synchronized teamwork, strict project and cost management, dedicated customer service and a highly developed sense of aesthetics. This is what Tissa Builders & Contractors delivers.

Their team at Tissa Builders & Contractors is dedicated to meet facility development objectives of Road Development Authority, Provincial Road Development Authority, Provincial Road Development Department, Urban Development Authority and Other Government and Non Government authorities. Tissa Builders mission is seeing that their Clients achieve their business objectives through the precise and efficient construction of their business facilities. Their affiliated Company, Holcem (Pvt) Ltd manufactures quality cement blocks of SLS standard.

As a major Construction company they have maintained very high standard quality construction and they are committed to provide same in future developments works. Overall leadership to the company is providing by a vastly experienced Chief Executive Officer under the direction of the Board of Directors of the company.

ICONIC PROJECTS

1. Rehabilitation of Provincial and Municipal Urban Council Roads in Northern Province, Rehabilitation/ Improvements of Kokavil – Thnukkai Road (0.00 km to 10.0 km)

This is project of Chief Secretary Nothren Province and included the sub base work, drainage work, ABC work and DBST work.

2. Improvements to Anuradhapura - Rambewa Road (7.00 - 14.48 km)

This is project of Road Development Authority and the project covered the work scope of earthwork in base, sub base, ABC, DBST work, and structures.

3. Construction of building Complex for Main Library at Sothern University of Sri Lanka



4. Construction of Bridge at Madurupitiya Across Maoya on Mirigama Warakapola Road.

This is another project of RDA which is successfully completed by Tissa Builders.

5. JICA Funded Provincial Road Development Project in Central and Sabaragamuwa Province, Improvement of Panawala – Maniyangamuwa Road (0.00 km to 10.40 km)

SECTORS

Road Construction, Building, Construction, Bridge Construction, Irrigation Projects.



TISSA BUILDERS & CONTRACTORS

Kandalama, Mirigama, Sri Lanka
Tel: 033 227 5137
033 227 3228
Fax 033 227 3796
Web: www.tbc.lk
E-mail: tissabuilders@sltnet.lk,
tissabuilders@gmail.com

INTRODUCTION

TRIO has emerged from the term “tri” inspired by three friends and founded in year 1997 led by Mr. P. G. Punchihewa from Matara. Its initial journey began with minor contracts in the government sector; NWS&DB, Department of buildings, etc. as ICTAD C-08 scale constructor and all the dedications and commitments of all the team members uplifted TRIO up to C-01 grading in year 2013. Within that hard journey, TRIO has been able to achieve several excellence, appreciations, accreditations awarded by the National and International organizations, clients and consultants for their quality and timely performances in Civil Constructions which is supported by its own two subsidiaries; Trio Color Master & Trio Hardware.

TRIO has been accredited by ISO 9001-2008; currently audited by Moody International and obtained memberships of ICTAD/ NCASL / CCI / MDCCI / NCASL (M&S)/TUV-Australia being a leading constructor in Sri Lanka. Organization is currently handling Civil Construction Projects valued around Rs.1 billion. all over the island; especially expanding towards northern & central; Kilinochchi and Kandy. The major strength of the organization is the Professional Management Staff and the dedicated team members supported by new technology, machineries and equipment, etc. Trio started their financial assistance with the Seylan Bank PLC and later we extend our financial capability with Pan Asia Bank DFCC Bank together with Union Bank Colombo Plc and so far they have provided the fullest financial assistance and corporation throughout the peaks and downturns. Trio is currently targeting jobs in overseas and design & build projects within the country and further the property development sector through implementing the township concept.



ICONIC PROJECT

1. Building for Faculty of Architecture for University Moratuwa

Construction of Faculty building for University of Moratuwa is major project completed by TRIO Construction under the consultancy of Estate Engineering Corporation

2. School building for Nakulugamuwa Primary School

This is another major project completed by TRIO Construction for United Nation Office for Project Services

3. Bank of Ceylon Branch office & Managers Quarters at Middeniya

This project included Constructing of Bank of Ceylon Branch office & Managers Quarters at Middeniya for Bank of Ceylon under the consultancy of Deveco Architect.

4. Building for Faculty of Applied Science

This is a project of University of Jayawardanapura.

5. Asiri Hospital Matara Asiri Hospital for Asiri Hospaital

ONGOING PROJECTS

1. Building for Bank of Ceylon Branch office & Managers Quarters at Kilinochchi



2. Building for Lecture Theater for University of Ruhuna under the consultancy of Central Engineering Consultancy Bureau

3. Building for Management & Finance Faculty for University of Ruhuna under the consultancy of Central Engineering Consultancy Bureau

4. Building for Faculty of Dental – Design & Build Project

5. Building of University of Moratuwa

SECTORS

High Rise Buildings, Highways & Bridges, Water supply & Drainage, Dredging & Reclamation.



Trio Constructions (Pvt) Ltd

No 177, TRIO Tower, Galle Road, Walgama, Matara, Sri Lanka.
Telephone : (+94)41 22 27524
(+94)41 22 33631
Fax : (+94)41 22 22486
Trio Color Master : (+94)77 20 86666
(+94)71 41 76907
Web : www.trioconstructions.com
E-mail : trioconst@gmail.com

INTRODUCTION

Tudawe Brothers is amongst the oldest and most well reputed construction companies in Sri Lanka, with a wealth of diverse experience and exposure. Our corporate philosophy of trust, integrity and quality has placed us at the forefront of the construction industry.

The company provides end-to-end solutions for residential and housing complexes, foreign missions, offices, shopping complexes, hostels, hotels, hospitals, educational institutions, highways, bridges, water supply and

drainage, irrigation, land storm water drainage and other infrastructural work.

At Tudawe Brothers, they adhere to global standards in construction, with appropriate supervision and project control to maximize quality, a focus on sustainable development and solid solutions to construction challenges.

The dedicated architects, engineers and quantity surveyors that drive the firm's activities are ably complemented by a team of multi-skilled and competent support staff. The company also actively procures the latest construction technologies to assist its highly skilled workers.

Bearing in mind that time is money, Tudawe Brothers places as much emphasis on completion times and work schedules as it does on quality workmanship. Every effort is taken to ensure that each project is a success.

While retaining its market leadership in the construction of housing units, Tudawe Brothers also branched out into the construction of highways, highway structures, bridges, water supply and water treatment plants, sewage treatment plants, office complexes, shopping malls, industrial estates, schools and hospitals. Five associate companies were launched in order to complement the work done by Tudawe Brothers Ltd. and offer end-to-end housing solutions.



ICONIC PROJECTS

1. Dialog Axiata Head Office

Dialog Axiata building constructed by Tudawe Brothers (Pvt) Ltd. The building is a 15 storey Office building, built to the Leed Gold standard and it is a latest addition to the Colombo Skyline.

2. Urban Regeneration Programme initiated by the Urban Development Authority in Colombo, Sri Lanka

Tudawe Brothers (Pvt) Ltd constructed 546 housing units under the Government Urban Regeneration Program initiated in Colombo. This project included 546 housing units comprising of 400 square feet in extent built within four towers of ground + 11 floors. This unique residential project was successfully completed and delivered in a cost effective and timely manner while raising the bar in quality. By knowing the responsibility, our aim was not limited to construction of 546 housing units but to support and create an environment where the residents of these units are respected and assured of a quality lifestyle.



3. St. Michael's Apartments Colombo, Sri Lanka:

A 17 Storey luxury apartment complex comprising 96 housing units with 5 levels for parking. St. Michaels Apartment was founded on a raft. The total floor area of the complex is 220,893sq.ft. Of this 55,265 sq.ft is dedicated to the parking of 120 vehicles. The project also features a sum tank (78,500 gallons) Overhead tank (25,000 gallons) high speed elevators, stand by generator for all apartments, common area lighting, water supply and drainage, fire protection and detection system and more. Tudawe Brothers also undertook the design and construction of the Mechanical and electrical Engineering (M & E) services.

4. Auditorium & Sports Complex for Musaeus College, Colombo, Sri Lanka

5. Airport Garden New Wing Details

6. Remedial Works on Kaudulla Dam

ONGOING PROJECTS

1. Housing for underserved - Colombo 14

Design & Construction of 672 Housing Units at Aluth Mawatha, Mattakkuliya under the Urban Regeneration Project of City of Colombo (Phase II)

2. Road, Highway & Bridges

Improving the country's road network is a priority for economic development. Tudawe Brothers has partnered with state agencies in refurbishing and rebuilding road networks and bridges around Sri Lanka. "Tudawe Brothers is pleased to record the completion of the Rehabilitation & Improvement to Bibile - Pitakumbura - Namaloya - Inginiyagala road of length 60.31km & width of 7.2m road connecting Monaragala and Ampara districts.

ICTAD / CIDA Grading
C 1 – Building Construction
C 1 – Highway Construction
C 1 – Water Supply & Drainage
C 3 – Bridge Construction
C 3 – Irrigation & Land Drainage
C 3 – Storm Water Drainage
C 7 – Dredging & Reclamation
EM 1 – Electrical & Mechanical Works under Tudawe Engineering Services (Pvt) Ltd.

3. Minipe Transbasin Canal – Dam safety and water resources planning project for Mahaweli Authority of Sri Lanka

SECTORS

Highways, Highway structures, Bridges, water supply and water treatment Plants, sewage treatment plants, office complexes, shopping Malls, Industrial estates, schools and hospitals

Support Services

Besides serving the demands from its own projects, Tudawe Brothers support the domestic construction industry by supplying the excess production from the Quarry, Crushers, RMC and Asphalt Concrete Batching Plants.

AC, Fire, Electrical & Plumbing

Through its subsidiaries, Tudawe Brothers provide all building service under one roof. Aluminium fabrications and installation, "HT" power supply needs and interior décor work including manufacture of furniture are specialties now available within the group.



Tudawe Brothers (Pvt) Ltd

505 Elvitigala Mawatha,
Colombo, Sri Lanka
Tel : +94 (0) 112368494,
+94 (0) 112368451
Fax : +94 (0) 112501922
Web : <http://www.tudawe.com/>
Email : tblinfo@tudawe.com

INTRODUCTION

V V Karunaratne & Co, established in 1965 is a leading construction company in the island. Company is specialized in Highways, Bridges, Water supply systems and High rise buildings. They have undertaken numerous such works during the last 50 years all over the country.

The company has been recognized by the CIDA (governing body for regulating construction works in the Island) to be the highest grade C1 in above sectors.

At present V Vkarunaratne& Co. handles many construction contracts all over the island, majority of them in the North and Eastern provinces. Employer for most of these projects is the Sri Lankan government and these projects are funded by the donor agencies like ADB, World Bank, JAICA, and OFID etc.

The company employs best and talented set of professionals to handle the Engineering and management part of the works undertaken. Highly motivated Professional Engineers, Quantity surveyors, Land surveyors, Planning Engineers, Mining Engineers handle these construction works according to the best practices in the industry today.

The company owns a large number of modern machinery and plants used in the industry. Metal quarry / crusher plants, Asphalt concrete mixing plants and concrete ready mixed plants are permanently established in

several locations in the island so that they can supply required construction materials to any work site without interruption.

V V Karunaratne & Co is adopting ISO 9001: 2008 quality management system since 2008 for its operations. With this system the company has improved the quality of their products and services to the highest satisfaction of its employees.

VV Karunaratne & Co. was awarded the construction excellence awards by ICTAD (Now CIDA) in 2009, 2011, 2012, 2013 for following constructions completed during the respective years,

ICONIC PROJECTS

1. Construction of Proposed Head Office Building for the Department of Census and Statistics.

Construction and completion of ten storied head office project for Department of Census and Statistics including all services with M & E works, two car parks in ground floor and first floor.

Floor area 10,500M2. This is a project of Ministry of Finance & Planning and completed in 24 months.

2. Construction of Emergency Trauma Centre at Karapitiya Hospital.

Construction of Building & Engineering Works of Emergency Trauma Centre at Karapitiya Hospital in Galle District Funded

by the State Government of Victoria – Australia Floor area: 4,500 m2
No of Floor:3. This is a project of United Nations Office for Project Services (UNOPS) and successfully completed in 21 months

3. Upgrading Elpitiya District Base Hospital

The works comprised of construction of a new four storied building with two Operating theaters, special care units and wards. Floor area: 7500 m2, No of Floor:4. This is a project of AmeriCares Sri Lanka, and successfully completed in 18 months of time.

4. Rehabilitation of Navatkuli – Kerativu – Mannar Road (A32)

During the last phase of the war this alternative access to Jaffna peninsula was rebuilt with a concrete pavement. Each contractor was given one kilometers of the road to be completed within a duration of 3 months. This project was for the Road Development Authority,

5. Construction of Denawaka Ganga Mini Hydropower Project

This was a 1.4 MW mini-hydro power station built with a dam, concrete via duct and penstock in Rathnapura district. Earth works, construction of weir & intake, construction of forebay tank, desalting tank, headrace canal, penstock line, power house & tail race, supply & fixing of trash racks, gates etc. This is a project for KDU Mini Hydro Power (Pvt) Ltd.

ONGOING PROJECTS

1. Rehabilitation and Improvements to B 541 - Thampalakamam - Kinniya Road

This road gives access to the Kinniya town from Kanthalai – Trinco road is 9 Km including Kinniyatown. New road trace is running through marshy low land area that required special soil treatments. The contract includes the construction of 13 new bridges. This is a project for the Road Development Authority and completed in 18 months.

2. Rehabilitation & Upgrading of (B300) Muttettugala - Hiripitiya Road

This is a project initiated by V.V. K with funds arranged from Hatton National Bank. V V K did the total design of the road with a length 18Km. This is a project for the Road Development Authority.



3. ADB Funded Northern Road Connectivity Project Rehabilitation of A014 Medawachchiya - Mannar - Talaimannar Road

This is a 15 Km Road in Mannar district with 9.3 m wide carriageway. Funded by ADB this road will be completed by mid-November 2015. This is a project of RDB.

4. Design & Build the Colombo City Water Supply Improvement Project - Phase 1

This is also a design and built contract with funds arranged by VVK through the BOC. This Rs. 2.7 Billion project comprised of laying 10.5 km of D I pipes of various diameters in Greater Colombo area. The project is intended to supply water to proposed hotel project by Shangrila, Lotus tower and various other high profile projects. This is a project of Water Supply and Drainage Board and completed in 24 months of time.

SECTORS

Road Construction, Bridge Construction, Building construction & Water Supply Scheme.



V.V. Karunaratne & Company

No. 579, Kandy Road,
Bulugaha Junction, Kelaniya, Sri Lanka.

Tel. : +94 11 5422222 (HUNT)

+94 11 2913166-7

Fax : +94 11 2914153, +94 11 5422299,
+94 11 5422288

Tel : +94 11 5422277, 2916892

Fax : +94 11 5422288, 2914153

Email : construction@vkarunaratne.lk

INTRODUCTION

With over 35 years of construction excellence, CML-MTD Construction Ltd., a leading specialist C1 graded construction firm in Sri Lanka, is the civil engineering subsidiary of MTD Walkers PLC and is a member of the Walkers CML Group of companies.

The Walkers CML group synergies between the subsidiary companies compliments CML-MTD's business operations. Walkers' Piling, the pioneer pile foundation company in Sri Lanka specialises in constructing bored cast in-situ reinforced concrete pile foundations. Walkers Sons & Company Engineers, is an end-to-end solutions expert with core competencies in mechanical engineering and project support, while having capabilities in the fields of electrical engineering and building services.

CML-MTD is triple certified with ISO 9001:2008, ISO 14001: 2004 & OHSAS 18001:2007 and owns & operates several asphalt manufacturing plants, concrete batching plants and has its own in-house quarry operations. With equipment ranging from a fleet of heavy machineries and trucks to drilling equipment and both mobile and fixed asphalt plants, mobile and semi mobile

rock crushers, CML-MTD is well-equipped to ensure the success of any project it commits to undertaking.

A track record of successfully completing over 125 major projects has contributed to the Company's PQ capability and has made it eligible to be short listed for ongoing programs like:

- Road network improvement.
- Local bank assisted road reconstruction & water supply projects.
- ADB/RDA road network improvement and road sector development projects.
- Kuwait funded bridge rehabilitation and construction.
- UDA/ADB town development projects.
- NWSDB town water supply project.
- IKFW/NESDB water supply projects.

In addition, the Company has also been a subcontractor to many leading international contractors operating in Sri Lanka and has been involved in international donor funded development projects.

SERVICES

The services available to both government and private agencies/establishments are as follows:

- Specialised in earth moving and land grading.
- Construction and maintenance of roads, highways and bridges.
- Construction of civil engineering and infrastructure work for industrial parks, and housing schemes such as storm water drainage and irrigation systems.
- Port construction and building of revetments and break waters.
- Laying of all types of pipes and building of water supply and drainage related structures.
- Construction of apartment complexes and high-rise buildings.
- Sheet piling.
- Pre-cast and in-situ concrete pile driving.
- Industrial quarrying and aggregate production.
- Precast concrete product manufacturing.
- Ready-mix concrete production.
- Asphalt concrete production.
- Capable of undertaking major civil works in any field of construction.

CML-MTD's Value Proposition:

- Resources to ensure the highest level of service delivery to the client in undertaking large scale construction, infrastructure



and civil engineering projects both, in the private and public client segments.

- Continuous investment in research and development to ensure innovative and modern construction techniques.
- Value added development and training programs ensuring a competent skilled workforce.
- Overall, efficient operations by way of continuous improvement to maintain a competitive advantage in order to deliver a value added service.

ICONIC PROJECTS

1. Galle Port Access Road

Client – China National Technical Import & Export Corporation

Project Title – Galle Port Access Road Southern Transport Development Project - South Section Exim Bank Funded Highway Section from Pinnaduwa to Godagama

2. UDA Housing Project, Ferguson Road

Client – Urban Development Authority (UDA)

Project Title – Relocation of Under Served Settlements in the city of Colombo, Ferguson road, Colombo 15

3. Parliament Bridge

Client – Irrigation Department of Sri Lanka

Project Title – Widening of Bridge No 1/1 on Security Access road to Parliamentary Complex, Kotte

Client – Road Development Authority (RDA)



4. Kelaniya Railway Bridge

Project Title – Under the package “Construction and erection of five Railway Bridges (in Kelaniya, Kaluthara North and South, Ja-Ela and Seeduwa)”. CML-MTD were sub-contractor to Waagner Biro Brukenburg AG of Austria
Client – Sri Lanka Railway

5. Nalanda Dam

Project Title – Remedial works for Nalanda Dam

ONGOING PROJECTS

1. Hambantota Hub Roads - HR1



Road Project

Project Title – Rehabilitation of Mirijjawila Sooriyawewa (HR16 – 23.3 KM) and Outer Circular Road (HR01 – 6.6 KM) of the Hambantota Hub Development Project.
Client – Provincial Road Development Authority (PRDA)



2. Hambantota Hub Roads - HR16 Road Project

Project Title – Rehabilitation of Mirijjawila Sooriyawewa (HR16 – 23.3 KM) and Outer Circular Road (HR01 – 6.6 KM) of the Hambantota Hub Development Project.
Client – Provincial Road Development Authority (PRDA)

3. Buttala - Monaragala Water Supply Project

Project Title – Monaragala & Buttala Integrated Water Supply Project
Client – National Water Supply & Drainage Board (NWSDB)



SECTORS

Construction specialists in highways, bridges, buildings, irrigation, water supply & drainage, land reclamation, port construction, piling, quarrying and engineering design.

Suppliers of construction aggregate, asphalt concrete and concrete for infrastructure projects.



Walkers CML

155, Dharmapala Mawatha,
Colombo 7, Sri Lanka.
Tel : + 94 11 2440774 & 2436877
Fax : + 94 11 2440896
Web : www.cmlmtd.net
Email : Info@cmlmtd.net
Contact Person : Mr. D. N. Jayasuriya
Managing Director/CEO

INTRODUCTION

MTD Walkers PLC came into being in November, 2006 as a result of MTD Capital, a leading Malaysian based infrastructure development company with offices in thirteen countries, around the world purchasing a majority stake in Kapila Heavy Equipments PLC, the holding company of the Walkers Group of Companies which had been established as a public Company in 1981 and subsequently listed on the Main Board of Colombo Stock Exchange in 1983. Kapila Heavy Equipments PLC was subsequently re-named as MTD Walkers PLC on 12th December 2007. Walkers Group of Companies has a long history of being in operation in Sri Lanka for over 150 years with its origin in 1854.

MTD Walkers PLC has had as its core businesses the manufacture of tea machinery, and have now ventured into other engineering functions such as piling (heavy foundations), steel fabrication and other infrastructure development projects.

MTD Walkers PLC has five subsidiaries namely Walker Sons & Company Limited, Walker Sons & Company Engineers (Private) Limited, Walker Sons & Company (Distributors) Limited, Walkers Piling Private Limited and Transport & General Finance Company Ltd.

Walker & Sons Company Engineers (Private) Limited, project division has undertaken and completed large steel fabrication work with Holcim Lanka Limited, renovation of 8 stop-logs in Randenigala project of Mahaweli Authority, Arugambay steel bridge, repairs to tank no.27 of Ceylon Petroleum Corporation at Kolonnawa, repairs to tank no.3 of Kelanitissa Power Station of Ceylon Electricity Board, fabrication and installation of new steel radial gates under Moragoda Project of Irrigation Department.

The Air-conditioning and Refrigeration Division of Walkers provides Engineering solutions for precision air conditioning applications such as Data Processing Centers, Telecommunication Facilities, Switching Stations, Networking Rooms and other heavy Industrial Applications where the Indoor temperature, relative humidity and air filtration levels have to be maintained within close tolerance. The division provides comfort, central air conditioning systems inclusive of Systems design, installation, commissioning and after sales services for commercial banks, high-rise IT educational facilities, shopping and office complex namely Sri Lanka Telecom, University of Colombo – School of Computing, Sri Lanka Institute of Information Technology, Dankotuwa Porcelain Limited, Central Bank of Sri Lanka, Ceylon Electricity Board, Commercial Bank Head Quarters.

Walkers Piling Limited, a subsidiary of MTD Walkers PLC was a pioneer piling company in Sri Lanka, which commenced operations on 9th January 1981. Walker Piling has undertaken very large piling contracts in both public and private sector in Sri Lanka. Some of the recent projects undertaken and completed by this division are Sri Lanka Customs building, Maligawatte fly-over, Kerawalapitiya power station, Arugambay bridge, Ceylon Petroleum Corporation head Quarters building to name a few. Walker Piling being in the industry for Twenty Eight years, is a ISO 9001-2000 certified Company.

ICONIC PROJECTS

1. Piling Work For Construction of The Secretariat For Personal Identification For Ministry Of Defence And Urban Development Sethsiripaya , Battaramulla.

2. Baseline Road Development and Extension Project, “Fly Over” Demotagoda Railway Crossing

3. Piling Work For Proposed Office Building For People’s Leasing Havelock Properties Ltd, At No. 07, Havelock Road, Colombo 05

4. Baseline Road Housing Project Colombo 09, Sri Lanka

5. Construction of Head Office for People’s Leasing Company Ltd - Piling Work Colombo 08, Sri Lanka.

ONGOING PROJECTS

1. Piling Work for the Urban Regeneration Project in City of Colombo (Low Cost Housing Project) at Maligawatta (Apple Wattala).
2. Bored Piling and Earth Retaining System for the Proposed Twin Towers for Makola Yathama Holdings (Pvt) Ltd at No. 95, Hydpark Corner, Colombo 02.
3. Erection of Foundation For 220 Kv Transmission Line Towers.
4. Piling Work for Proposed Urban Regeneration Project – City of Colombo Modara.
5. Piling Work for Proposed Patel Sqanda Housing Development Project at Dr. Danister De Silva Mawatha, Orugodawatta.
6. Piling Works for Proposed Widening of Existing Bridge over Bloumendhal Road.

SECTORS

Mechanical Engineering, Civil Engineering, Piling & Foundation, Electrical Engineering, Air-conditioning, Industrial & Machinery, Construction.



Walkers CML Piling

No18, St Michael's Road,
Colombo 3 , Sri Lanka

Tel : + 94 11 2473677

Fax : +94 11 2478597

Web : <http://www.mtdwalkers.com/>

E-mail : engineers@mtdwalkers.com

INTRODUCTION

Business Promoters & Partners Engineering (Pvt) Ltd., (BPPE) was established in year 2007 as a limited liability company. Since then the company has striven to carve a niche for itself in the construction industry.

Accredited with CIDA grading C-1 and ISO certified company, BPPE has completed many challenging projects in the areas of Highways, Bridges, Water Supply and Sewerage, Irrigation & Drainage Canals, Dredging & Reclamation, Storm Water Disposal & Land Drainage, Maritime Constructions and Buildings.

While ensuring a competitive edge in the construction industry, BPPE is dedicated to exceeding customer expectations by adhering to a structured organization with an exceptional planning process, which assures the on time project delivery with desired quality.

BPPE has expanded its spectrum in the business field by giving the opportunity to entrepreneurs to grow by displaying their competencies while supporting their mission.

The next phase of the growth of the company is focusing on value added Engineering solutions, design & build projects, promoting BOT and BOO projects funded with local and international partnerships and other forms of business models.

During the tenure of eight years, BPPE has received numerous accolades including the Gold Award for the construction sector at the National Business Excellence Awards 2014 conducted by the National Chamber of Commerce of Sri Lanka (NCCSL) and “Excellence in Engineering for Construction” at the Engineering Excellence Awards 2015 conducted by the Institution of Engineers Sri Lanka (IESL).



The contribution towards the industry with the excellence in performance, BPPE is dedicated to ensure upholding of the living standards of people through infrastructure development in the country satisfying all stakeholders, whilst having a great concern over the quality and the environmental expectations.

ICONIC PROJECTS

Roads & Highways

Rehabilitation & Improvements to Thalgodapitiya - Yatawatta - Dombawela Road Project.



The rehabilitation and improvement of this 26.40km long two lane road includes Asphalt road surfacing, base improvements, reconstruction of all structures town improvements and incidental work. This road connects Kurunegala and Mathale and it will be completed by mid of year 2016.

Storm Water Drainage

Construction of Bank Protection Works of Eastern Bank of East Beira Lake Project.



This works involved the rehabilitation of the banks of East Beira Lake, reclamation and to develop lands and the construction of storm water drains and lake outfalls whilst improving the quality of environment and the beauty of the city. The project was completed in November 2014.

Bridges

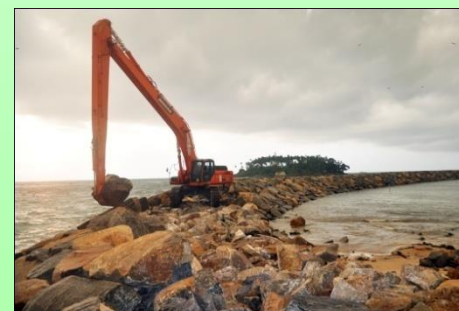
Construction of Aravi Aru Bridge in Arrippu on Thallady Arippu Marrichchukaddi Road (B-403).



The Aruvi Aru Bridge was constructed across Malwathu Oya at Arippu. The bridge consisted of six spans, totalling 256m in length and 7.35m wide steel deck structure. It was successfully completed in July 2010.

Maritime Constructions

Proposed Anchorage Facility at Maradana Landing Site in Beruwala.



The project was proposed to construct a new fishery harbour at Maradana – Beruwala having capacity of 400 one-day and multi-day boats which consists a 240m long Breakwater and 50m long Groyne. Over 5000 fishers will be benefitted by this Anchorage and it will provide an effective solution to the issues of the fisher community in Beruwala area. This was successfully completed in March 2015.

Water Supply & Drainage

Batticaloa Water Supply Project - DI Pipe Laying in Batticaloa.



Batticaloa Water supply Project was one of the key development projects in the Eastern Province. This work involved the laying of 18km of raw water transmission line 800mm DI pipes.

The project was completed well ahead of the schedule and every household in Batticaloa District who had been deprived of basic needs are now enjoying pipe borne drinking water.

ONGOING PROJECTS

Irrigation & Land Drainage

Remedial Works of Muthuiyankaddu Dam Hydro/ Electro – Mechanical Works.

This is a dam safety and water resources planning project and involves in design, fabrication & installation of four numbers of radial gates (12ft x 20ft) at both left bank and right bank of the dam with fixing of electrical motors for electrification of hoist mechanism of gates. Raising un gated spill section with new ogee profile, construction of spill cum bridge and three (03) numbers of drop structures and formation of draining bund. The project will be completed in August 2016.

Storm Water Drainage

Construction of Bank Protection Works of Western Bank of West Beira Lake.

The work consists of the rehabilitation of the banks of West Beira Lake and to develop lands and the construction of storm water drains, lake outfalls and the discontinuation of all waste water outlets including sewerage lines to the lake, whilst improving the quality of environment and the beauty of the city. The project is scheduled to be completed in September 2016.

Maritime Constructions

Excavation & Revetment Construction Works at Port of Galle.

The objective of the project is Construction of Grades Rock Revetment and Excavation of Harbour Basin in the Proposed Yacht Marina at Port of Galle.

By detour the water we were able to complete the construction successfully and it is in the process of handing over.

PRODUCTION SECTOR

Quarry & Crusher Plants at Oddusudan, Mulativu.

Our quarry and crusher plants at Oddusudan have the capacity of producing all types of quality (certified) aggregate products for integrated engineering applications.

Over the years we have served Northern region rehabilitation & development work by catering aggregate and rubble provision in construction of roads, railway & irrigation while fulfilling domestic needs of people in the area.



Asphalt Batching Plant at Galigamuwa, Kegalle.



Production division is further strengthening in the industry by establishing an Asphalt Batching Plant at Galigamuwa. This plant mainly catered Galigamuwa – Ruwanwella Road Project to deliver our project on time assuring the quality with better economy. High production capacity of plant is capable of meeting the demand of various development projects in the area.

Asphalt Batching Plant at Lihiniwehera, Kurunegala.

Over the past few years our range of roads and highway projects also continued to grow. This created the opportunity to commission our second asphalt batching plant at Kurunegala. This caters mainly our Kurunegala Road Project requirements while meeting other project requirements as well.

Business Promoters & Partners Engineering (Pvt) Ltd.

No. 130, Dehiwala Road
Boralesgamuwa
Tel : +94 11 2517848
Fax : +94 11 2509681
Email : info@bpp.lk
Web : www.bpp.lk

